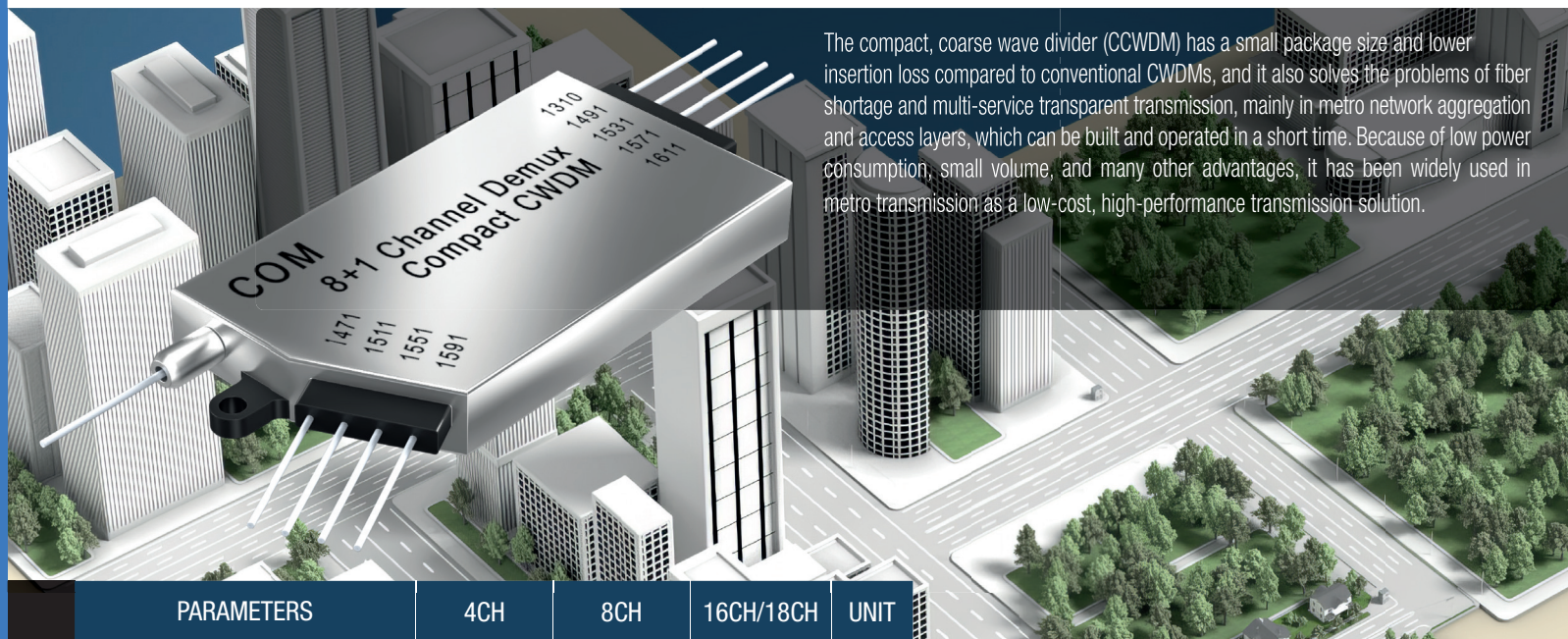


Mini Modules

## CCWDM MODULE

PIONEERING CUSTOM FIBER OPTIC SOLUTIONS FOR YOUR UNIQUE NEEDS



The compact, coarse wave divider (CCWDM) has a small package size and lower insertion loss compared to conventional CWDMs, and it also solves the problems of fiber shortage and multi-service transparent transmission, mainly in metro network aggregation and access layers, which can be built and operated in a short time. Because of low power consumption, small volume, and many other advantages, it has been widely used in metro transmission as a low-cost, high-performance transmission solution.

SPECIFICATIONS	PARAMETERS		4CH	8CH	16CH/18CH	UNIT
	Operating Wavelength		1260-1620			nm
	Channel Wavelength		1270~1610/1271~1611			nm
	Channel Spacing		20			nm
	Operating Bandwidth		>13			nm
	UPG Wavelength		1310+/-50 or 1260~1457.5		NA	nm
	Passband Insertion Loss		≤1.2	≤1.5	≤2.7	dB
	Adjacent Isolation		≥30			dB
	Non-Adjacent Isolation		≥40			dB
	UPG Isolation		≥15			dB
	Ripple		≤0.3			dB
	Return Loss		≥45			dB
	Directivity		≥50			dB
	Insertion Loss Temperature Sensitivity		≤0.5			dB
	Wavelength Temperature Shifting		≤0.002			nm/°C
	Polarization Dependent Loss		≤0.2			dB
	Polarization Mode Dispersion		≤0.2			ps
	Max Optical Power		300			mW
	Operating Temperature		-40~+85			°C
	Storage Temperature		-40~+85			°C

### FEATURES

- Low Insertion Loss
- Light Road is Glue-Free
- High Isolation
- High Stability And Reliability

### APPLICATION

- Wave Division Multiplexing System
- Metronetwork
- CATV system

### PACKAGE INFORMATION

Fiber Length	1 m, or others on request	
Fiber Type	G657A/Customize	
Pigtail Type	900um Loose Tube	
Dimensinons(mm)	Metal box L44×L25×H6	L50×L50×H6

\*Notes: 1.Insertion Loss tested without connector

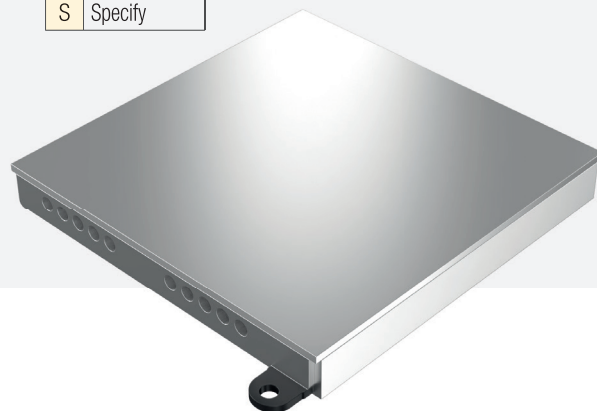
PIONEERING CUSTOM FIBER OPTIC SOLUTIONS FOR YOUR UNIQUE NEEDS

Toll free number 1-855-SNW-TECH  
Please contact your local sales representative for further details or questions.

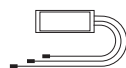
# CCWDM MODULE

PIONEERING CUSTOM FIBER OPTIC SOLUTIONS FOR YOUR UNIQUE NEEDS

CCWDM	CHANNEL		START WAVE-LENGTH		PACKAGE TYPE		FIBER JACKET		FIBER LENGTH		CONNECTOR		TYPE	
ORDER INFORMATION	2	2Ch	27	1270	4C	44x25x6	25	250µm Bare Fiber	10	1m (Std.)	0	None	MU	Mux
	3	3Ch	29	1290	4C1	44x28x6	9L	900µm Loose Tube	15	1.5 Meter	A	SC/UPC	DE	Demux
	4	4Ch		...	18C	53.8x28x8	S	Specify	S	Specify	B	SC/APC	A	Mux-Demux
	5	5Ch	59	1590	18C1	54x32x7.4					C	FC/UPC	S	Specify
	6	6Ch	61	1610	50C	50x50x6					D	FC/APC		
	7	7Ch	271	1271	MM	Insert Box					E	LC/UPC		
	8	8Ch	279	1291	RM	Rackmount					Q	LC/APC		
	9	9Ch		...	LG	LGX Box					S	Specify		
	A	10Ch	591	1591	S	Specify								
	B	11Ch	611	1611										
	C	12Ch	S	Specify										
	D	13Ch												
	E	14Ch												
	F	15Ch												
	G	16Ch												
	H	17Ch												
	J	18Ch												



## OTHER PACKAGES



Mini Modules



Devices

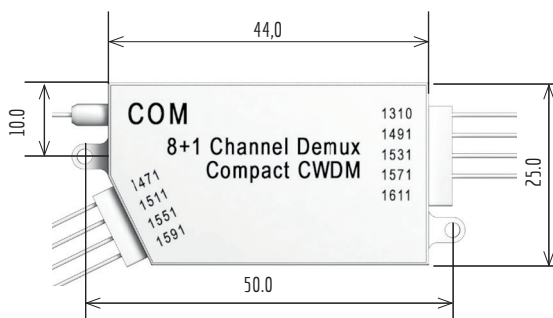


ABS Boxes

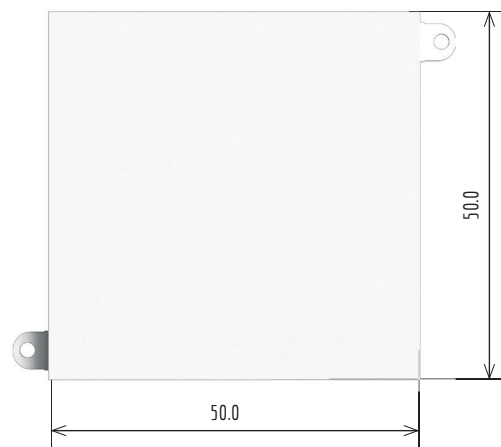


Plug in &  
LGX Packages

DIMENSIONS (Unit:mm)  
for 4Ch / 8Ch Box



DIMENSIONS (Unit:mm)  
for 16Ch / 18Ch Box



**F4M-CWDM- 8 - 55 - 4C - S - 00 - MU**

**SANWA Technologies, Inc.**

[www.sanwa-tech.com](http://www.sanwa-tech.com)

[sales@snwtech.com](mailto:sales@snwtech.com)

**Americas Sales-TX**  
 4012 Preston Rd.  
 Plano, TX 75093  
 Tel: +1 (972)-503-3031  
 Fax: +1 (972)-503-3032

**Americas Sales-MA**  
 287 Turnpike Road  
 Westborough, MA 01581  
 Tel: +1 (508)-616-9500  
 Fax: +1 (508)-616-9600

**Europe Sales**  
 Aleja Armii Krajowej 61, Bud. C,  
 50-541 Wrocław, PL  
 Tel: +48 71 7277237  
 Fax: +48 71 7939911

**Asia Sales**  
 13F, Changxing Rd., Luzhou Dist.,  
 New Taipei City 247, Taiwan  
 (R.O.C.)  
 Tel: +886 939512000  
 Fax: +886 2 8285450