



SANWA
TECHNOLOGIES

LC SERIES

High-Density Data Centers Connections

We Create, We Customize, We Connect





SANWA

T E C H N O L O G I E S

Providing engineering excellence, connecting you and beyond.

SANWA Technologies Co., Ltd. (formerly Sanwa Denki Kogyo Co., Ltd.) was established in 1947 and has since become a renowned manufacturer of communication and connectivity solutions, specializing in the global optical communications market. With over 75 years of innovation and engineering excellence, SANWA has developed and manufactured high-quality connectivity solutions and components to enhance the performance of optical networks both today and for the future.

Manufacturers designing products since 1947.

SANWA specializes in optical solutions that serve a broad range of international customers within the Telecom, Enterprise, Datacom, Premise wiring, CATV, OEM, Utility, Municipality, Security, and Aerospace/Military markets. With over 40 years of experience in fiber optic components and passive assembly manufacturing, we offer a variety of products and custom solutions tailored to your needs.

Our Vision

For over 75 years, SANWA has sought to establish relationships that are beyond transactional. Diligently collaborating on both custom and standard products with expeditious local support. Over time, we have transformed the traditional Japanese manufacturing philosophy, Monozukuri, exemplified in our everyday pursuit of manufacturing thoughtfulness, and equally focus on all aspects of product delivery: quality, time, and service.

ADVANCING TOGETHER,, FORGING THE FUTURE

At SANWA Technologies, we take great pride in our world-class manufacturing facilities that empower us to deliver high-quality products to our valued customers.

With two state-of-the-art factories, strategically located in Tokyo, Japan, and Ayutthaya, Thailand, we strive for excellence through cutting-edge technology, precision engineering, and a dedicated focus on quality. Each facility serves a unique purpose, allowing us to meet the diverse needs of our global clientele.

Japan Hachioji Factory: Leading Innovation and Research

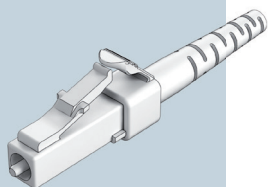
Our Hachioji factory, nestled in the western part of Tokyo, is the epitome of innovation and research. Equipped with the latest advancements in manufacturing technology, this facility drives our relentless pursuit of excellence. Our team of seasoned experts leads research and product development, ensuring that SANWA Technologies remains at the forefront of industry advancements. The factory also houses a robust QA, QC, and General Qualification Lab, where every product undergoes stringent testing to meet the highest quality standards. With a focus on low-volume and BCP production, as well as automated MT production and active device production, our Hachioji factory is a hub of progress and ingenuity.



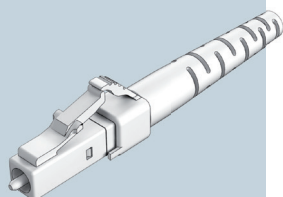
Thailand Ayutthaya Factory: Powering High-Volume Production

Nestled in Ayutthaya, Thailand, our second manufacturing facility is a powerhouse dedicated to high-volume production. With a sharp focus on efficiency and precision, this factory houses cutting-edge equipment for high-volume injection molding and precision assembly and testing. Quality is paramount, and our dedicated QA and QC Lab ensures that each product meets our stringent quality guidelines. We also prioritize tooling maintenance and repair, guaranteeing optimal performance and precision throughout the manufacturing process. For critical processes that demand a controlled environment, our Thailand factory boasts a semi-clean room, enabling us to deliver products with unparalleled purity and accuracy.



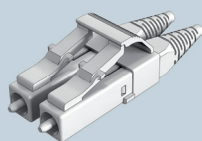
LC-UPC/APC
UNIBODY
CONNECTOR

| CODE | | TYPE | | FERRULE I.D. | | HOUSING | | BOOT | | BOOT COLOR | |
|----------|-------------------|------|---------|--------------|-------------------|---------|-------|------|-------|------------|-------|
| CN-LCUE | Elite Unibody UPC | SX | Simplex | 125 | SM 125µm | 1 | Blue | 1 | 900µm | 1 | Blue |
| CN-LCUAE | Elite Unibody APC | DX | Duplex | 125L | SM 125µm Low Loss | 3 | Green | 2 | 2.0mm | 2 | Black |
| CN-LCU | Unibody UPC | | | 1255 | SM 125.5µm | 4 | Beige | 6 | 3.0mm | 4 | Beige |
| CN-LCUA | Unibody APC | | | 126 | SM 126µm | | | | | 8 | White |
| | | | | 127 | MM 127µm | | | | | | |

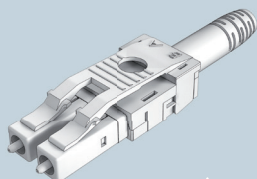
LC CONNECTOR
STANDARD
MULTIPIECE

| CODE | | TYPE | | FERRULE I.D. | | HOUSING | | BOOT | | BOOT COLOR | |
|----------|------------------|------|---------|--------------|-----------------|---------|-------|------|-------------------|------------|-------|
| CN-LCPA | Preassembled | SX | Simplex | 125 | 125µm | 1 | Blue | 1 | 900µm | 1 | Blue |
| CN-LCUK | Unassembled | DX | Duplex | 125L | 125µm Low Loss | 2 | Black | 2 | 2.0mm Standard | 2 | Black |
| CN-LCAPA | APC Preassembled | | | 1255 | 125.5µm | 3 | Green | 2B | 2mm Bendable Boot | 3 | Green |
| CN-LCAUK | APC Unassembled | | | 126 | 126µm | 4 | Beige | 4 | 2.0mm short 19mm | 4 | Beige |
| | | | | 127 | 127µm | 5 | Aqua | 6 | 3.0mm Standard | 5 | Aqua |
| | | | | 000 | No Ferrule Opt. | | | | | 8 | White |

LC-M CONNECTOR



| CODE | | TYPE | | FERRULE I.D. | | HOUSING | | BOOT | | BOOT COLOR | |
|------------|-------------------|------|---------|--------------|-------------------|---------|-------|------|-------|------------|-------|
| CN-LCMPAE | Elite LC-M | SX | Simplex | 125 | SM 125µm | 1 | Blue | 1 | 900µm | 1 | Blue |
| CN-LCMPAAE | Elite LC-M APC | DX | Duplex | 125L | SM 125µm Low Loss | 3 | Green | 12 | 1.2mm | 2 | Black |
| CN-LCMPA | Pre-Assembled | | | 1255 | SM 125.5µm | 4 | Beige | 2 | 2.0mm | 3 | Green |
| CN-LCMUK | Unassembled | | | 126 | SM 126µm | | | 6 | 3.0mm | 4 | Beige |
| CN-LCMPAA | Pre-Assembled APC | | | 127 | MM 127µm | | | | | 8 | White |
| CN-LCMUKA | Unassembled APC | | | 000 | No Ferrule Opt. | | | | | | |

LC UNIBOOT ROLL
OVER CONNECTOR
PRE-ASSEMBLED

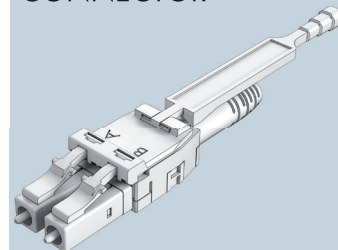
| CODE | | FERRULE I.D. | | HOUSING | | BOOT | | BOOT | |
|-------------|--------------------------------|--------------|------------|---------|----------------|------|-------|------|-------|
| SLCUT-2PHPR | LC Uniboot Roll Over Connector | 1255SM | SM 125.5µm | BL | Blue | 20 | 2.0mm | 8 | White |
| | | 127MM | MM 127µm | AQ | Aqua | 30 | 3.0mm | | |
| | | | | HV | Heather Violet | 50 | 5.0mm | | |
| | | | | LG | Lime Green | | | | |





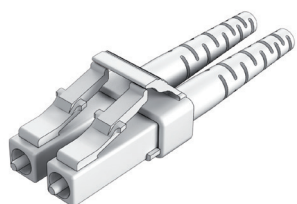
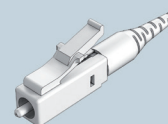
| CODE | | FERRULE I.D. | | HOUSING | | BOOT | | BOOT COLOR | | TAB | |
|--------------|----------------------|--------------|------------|---------|----------------|------|-------|------------|-------|-----|--------|
| SLCUPL-2PHPR | LC Push-Pull Uniboot | 1255 | SM 125.5µm | BL | Blue | 20 | 2.0mm | - | White | - | No tab |
| | | 127 | MM 127µm | GR | Green | 30 | 3.0mm | | | T5 | 50mm |
| | | | | AQ | Aqua | | | | | | |
| | | | | HV | Heather Violet | | | | | | |
| | | | | LG | Lime Green | | | | | | |

LC PUSH-PULL
UNIBOOT
CONNECTOR



| CODE | | FERRULE I.D. | | HOUSING | | BOOT | | BOOT COLOR | |
|----------|---------------|--------------|-------------|---------|-------|------|-------|------------|-------|
| SLC-PHPR | Pre-Assembled | 1255SM | SM 125.5µm | BL | Blue | 09P1 | 900µm | GR | Green |
| | | 1255AP | APC 125.5µm | GR | Green | 20P1 | 2.0mm | - | White |
| | | | | | | 30P1 | 3.0mm | | |

LC PM CONNECTOR



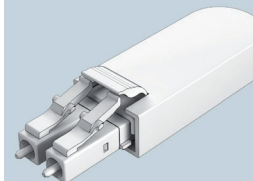
| CODE | | | COLOR | |
|----------------|-------------------------------------|--|-------|-------------|
| CN-LCMINIDXCLP | LC Mini Duplex Clip | | T | Transparent |
| CN-LCDXCLP-T | LC Simplex to Duplex Converter Clip | | S | Specify |

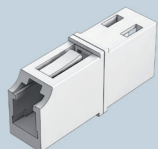
SPECIALTY CLIPS
HIGH DENSITY
LC SOLUTION



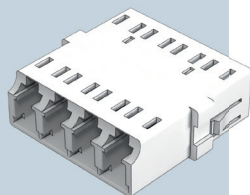
| CODE | TYPE | | CONNECTOR TYPE | | FIBER | | COLOR | |
|--------|------|------------|----------------|--------|-------|-------------|-------|----------|
| LB-LCK | SM | Singlemode | AA | LC/UPC | 9 | 900µm Fiber | 2 | Black MM |
| | MM | Multimode | BB | LC/APC | | | | |

LC LOOPBACK
MODULES

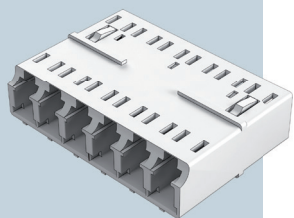


LC ADAPTER
STANDARD

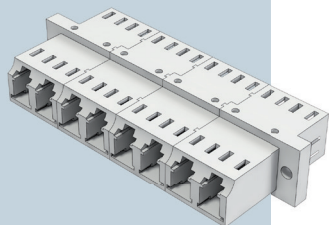
| CODE | TYPE | | COLOR | | SLEEVE TYPE | |
|-------|------|---------|-------|-------|-------------|---------------------------------------|
| AD-LC | SX | Simplex | 1 | Blue | 1 | Zirconia Ceramic |
| | | Duplex | 2 | Black | 2 | Phosphor Bronze |
| | DX | Duplex | 3 | Green | 3 | Elite Zirc. Ceramic (Ultra Low Loss) |
| | | | 4 | Beige | | |
| | | | 5 | Aqua | | |

LC ADAPTER
SC FOOTPRINT
SNR/JUN

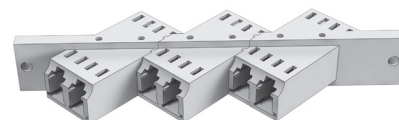
| CODE | TYPE | | COLOR | | SLEEVE TYPE | | FLANGE | |
|-------|------|--------|-----------------|-------|-------------|--------------------------------------|--------|-------------|
| AD-LC | DXSJ | Duplex | 1 | Blue | 1 | Zirconia Ceramic | FL | With Flange |
| | | | 2 | Black | 2 | Phosphor Bronze | NF | No Flange |
| | QDSJ | Quad | 3 | Green | 3 | Elite Zirc. Ceramic (Ultra Low Loss) | | |
| | | | 4 | Beige | | | | |
| | | | 5 | Aqua | | | | |
| | CL | | F4M Transparent | | | | | |

LC ADAPTER
MULTIPORT

| CODE | TYPE | | COLOR | | SLEEVE TYPE | |
|------|------|---------|-------|-------|-------------|------------------|
| SLC | 6ASP | 6 Ports | BL | Blue | ZR | Zirconia Ceramic |
| | | | BK | Black | | |
| | | | GR | Green | | |
| | | | BE | Beige | | |
| | | | AQ | Aqua | | |

LC STACKABLE
SERIES

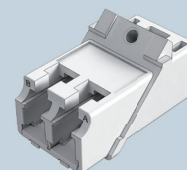
| CODE | TYPE | | COLOR | | #PORTS | | #ROWS | |
|----------|------|----------|-------|----------------|--------|----------|-------|---------|
| AD-STKLC | AN | Angled | 1 | Blue | N6 | 6 Ports | M1 | 1 Row |
| | | | 3 | Green | N8 | 8 Ports | M2 | 2 Row |
| | ST | Straight | 4 | Beige | N12 | 12 Ports | M3 | 3 Row |
| | | | 5 | Aqua | N.. | ~ Ports | S | Specify |
| | | | HV | Heather Violet | N24 | 24 Ports | | |
| | | | | | S | Specify | | |





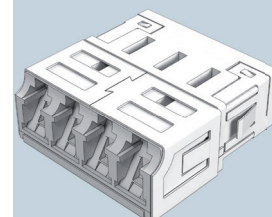
| CODE | TYPE | | HOUSING | | SLEEVE TYPE | | INTERNAL SHUTTER | |
|------|------|--------|---------|-------|-------------|------------------|------------------|--------------|
| SLC | 2A | Duplex | 45M | Metal | ZR | Zirconia Ceramic | SH | With Shutter |
| | | | | | | | B | No Shutter |

LC 45 DEGREE EMI SHIELDING ADAPTER



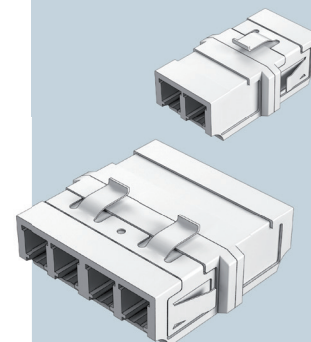
| CODE | TYPE | | HOUSING | | SLEEVE TYPE | | INTERNAL SHUTTER | |
|------|------|--------|---------|----------------|-------------|------------------|------------------|--------------|
| SLC | 2ASP | Duplex | BL | Blue | ZR | Zirconia Ceramic | SSH2 | With Shutter |
| | | | GR | Green | | | | |
| | 4ASP | Quad | AQ | Aqua | | | | |
| | | | HV | Heather Violet | | | | |
| | | | LG | Lime Green | | | | |

ALL-IN-ONE LC ADAPTER



| CODE | TYPE | | COLOR | | SLEEVE TYPE | |
|---------|------|--------|-------|-------|-------------|--------------------------------------|
| AD-LCSF | DX | Duplex | 1 | Blue | 1 | Zirconia Ceramic |
| | | | 2 | Black | 2 | Phosphor Bronze |
| | QD | Quad | 3 | Green | 3 | Elite Zirc. Ceramic (Ultra Low Loss) |
| | | | 4 | Beige | | |
| | | | 5 | Aqua | | |

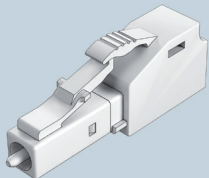
LC SNUG FIT



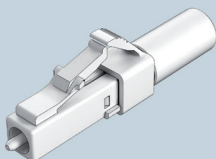


ATTENUATORS
& TERMINATORS

ATTENUATORS



TERMINATORS

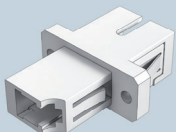


| CODE | | TYPE | | CONNECTOR TYPE | | ATTENUATION LEVEL | |
|------|-------------------------|------|----------|----------------|--------|-------------------|------|
| AT | Doped Fiber Attenuators | 1 | Standard | LC | LC UPC | 01 | 1dB |
| | | 2 | Special | LCA | LC APC | 03 | 3dB |
| | | S | Specify | | | 04 | 4dB |
| | | | | | | 05 | 5dB |
| | | | | | | 07 | 7dB |
| | | | | | | 08 | 8dB |
| | | | | | | 09 | 9dB |
| | | | | | | 10 | 10dB |
| | | | | | | 12 | 12dB |
| | | | | | | 15 | 15dB |
| | | | | | | 20 | 20dB |
| | | | | | | 25 | 25dB |
| | | | | | | 30 | 30dB |

| PRODUCT | CONNECTOR TYPE | |
|---------|----------------|--------|
| TM | LC | LC UPC |
| | LCA | LC APC |

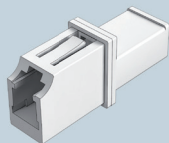
HYBRID ADAPTER

SC-LC HYBRID
ADAPTER



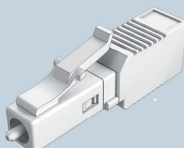
| CODE | SLEEVE | |
|----------|--------|----------|
| ADH-LCSC | 1 | Zirconia |

LC-MU HYBRID
ADAPTER



| CODE | SLEEVE | |
|----------|--------|-----------------|
| ADH-LCMU | 1 | Zirconia |
| | 2 | Phosphor Bronze |

LC-MU
CONVERSION
PLUG



| CODE | COLOR | OPTICAL FIBER AND WAVELENGTH |
|---------------------|----------|------------------------------|
| SCV-LCMU-SM-C | BL Blue | SM10/125 1.31μm • 1.55μm |
| SCV-LCMU-50/125-C | BE Beige | GI50/125 1.31μm |
| SCV-LCMU-62.5/125-C | BE Beige | GI62.5/125 1.31μm |

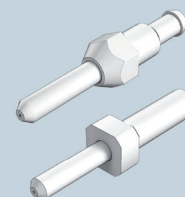


| FERRULE | | INNER DIAMETER | | FLANGE | |
|---------|--------------------------|----------------|---------|--------|-----------|
| F-MU-S | MU Connectors Singlemode | 125 | 125µm | NF | No Flange |
| F-LC-S | LC Connectors Singlemode | 1255 | 125.5µm | FL | MU Flange |
| | | 126 | 126 µm | | |

| FERRULE | | INNER DIAMETER | | FLANGE | |
|---------|-------------------------|----------------|-------|--------|-----------|
| F-MU-M | MU Connectors Multimode | 127 | 127µm | NF | No Flange |
| F-LC-M | LC Connectors Multimode | | | FL | MU Flange |

| CODE | | INNER DIAMETER | | LENGTH | |
|------|-----------------|----------------|--------|--------|-------|
| S-ZR | Zirconia Sleeve | 125 | 1.25mm | LC | 6.8mm |

ZIRCONIA FERRULES LC-MU SINGLEMODE



ZIRCONIA FERRULES LC-MU MULTIMODE

ZIRCONIA ADAPTERS SLEEVES



ZIRCONIA FERRULES

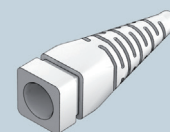
| SMALL FORM FACTOR BOOTS | | BOOT COLOR |
|-------------------------|-------------|---------------|
| BOOT CODE | DESCRIPTION | |

| LC BOOTS | | |
|---------------|--------------------------------|----------|
| F4M-BTLC9B | 900µm LC Boot | 1 Blue |
| F4M-BTLCDX9 | 900um LC Boot for DX Connector | 2 Black |
| F4M-BTLC12B | 1.2mm LC Boot | 3 Green |
| F4M-BTLC2B | 2.0mm Standard LC Boot | 4 Beige |
| F4M-BTLC19L2R | 2.0mm Round short 19mm LC Boot | 5 Aqua |
| F4M-BTLC3B | 3.0mm Standard LC Boot | 6 Red |
| F4M-BTLC2BFL | 2.0mm Bendable LC Boot | 7 Yellow |
| F4M-BTLC3BFL | 3.0mm Bendable LC Boot | 8 White |
| F4M-BTLC245D | 45° Angled LC Boot | 9 Gray |
| F4M-BTLC290D | 90° Angled LC Boot | |

| LC-M BOOTS (SPECIFIC) | |
|-----------------------|-----------------|
| F4M-BTLCM9B | 900um LC-M Boot |
| F4M-BTLCM2B | 2.0mm LC-M Boot |
| F4M-BTLCM3B | 3.0mm LC-M Boot |

Standard LC connectors crimps works with 1.6,1.8 and 2mm cables
For LCM and standard LC with short boots is offered the 32mm version

| LC CRIMP OPTIONS | | | | |
|------------------|---|------|------------|----------------|
| HEATSHRINK | C | L | CRIMP SIZE | CRIMP & EYELET |
| F4M-CRLC2-19-7B | | 19mm | 2.0mm | - |
| F4M-CRLC2-19-8B | | 19mm | | |
| F4M-CRLC2-32-7B | | 32mm | 2.0mm | - |
| F4M-CRLC2-32-8B | | 32mm | | |
| F4M-CRLC2-7B | | 42mm | 2.0mm | - |
| F4M-CRLC2-8B | | 42mm | | |
| F4M-CRLC3-7B | | 42mm | 3.0mm | F4M-CR3LC |
| F4M-CRLC3-8B | | 42mm | | |



LC BOOTS





LC BOOTS



F4M-BTLCDX9

LC Multi-piece - Boot 900um



F4M-BTLC12B

LC Unibody connector - 1.2mm LC Boot



F4M-BTLC2B

STD LC connectors /LC Unibody connector
2.0mm Boots



F4M-BTLC3B

STD LC connectors /LC Unibody connector
3.0mm Boots



F4M-BTLC19L2R

STD LC connectors /LC Unibody connector
19mm short boot for 2.0mm



F4M-BTLCxBFL

STD LC connectors /LC Unibody connector
Flexible bendable boot - 2.0mm/3.0mm



F4M-BTLCx45D

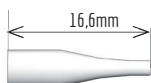
STD LC connectors /LC Unibody connector
45° Angled LC boot for 2.0mm/ 3.0mm



F4M-BTLC290D

STD LC connectors /LC Unibody connector
90° Angled LC boot for 2.0mm/3.0mm

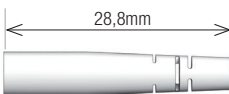
MULTIPIECE



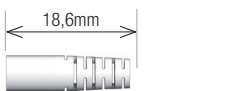
F4M-BTLCDX9
LC Multi-piece - Boot 900um



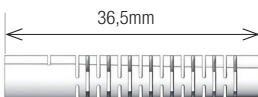
F4M-BTLC12B
LC Unibody connector - 1.2mm LC Boot



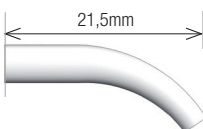
F4M-BTLC2B
STD LC connectors /LC Unibody connector
2.0mm Boots



F4M-BTLC3B
STD LC connectors /LC Unibody connector
3.0mm Boots



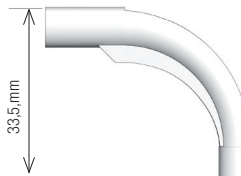
F4M-BTLC19L2R
STD LC connectors /LC Unibody connector
19mm short boot for 2.0mm



F4M-BTLCxBFL
STD LC connectors /LC Unibody connector
Flexible bendable boot - 2.0mm/3.0mm

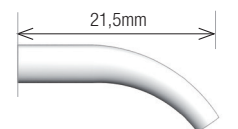
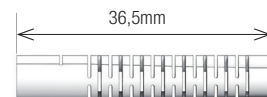
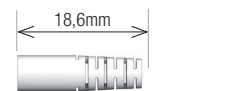
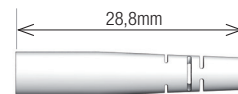
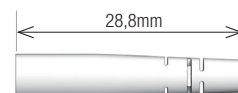
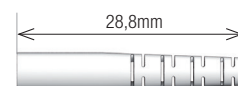


F4M-BTLCx45D
STD LC connectors /LC Unibody connector
45° Angled LC boot for 2.0mm/ 3.0mm



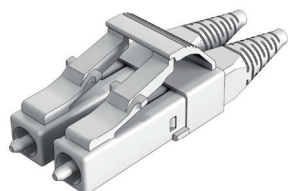
F4M-BTLC290D
STD LC connectors /LC Unibody connector
90° Angled LC boot for 2.0mm/3.0mm

UNIBODY

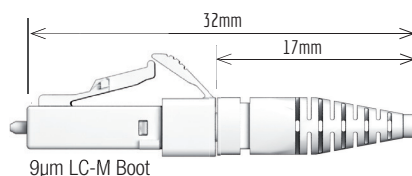




LC-M BOOTS



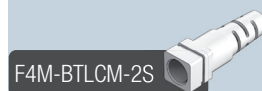
| LC-M BOOTS (SPECIFIC) | |
|-----------------------|-----------------|
| F4M-BTLCM9B | 900um LC-M Boot |
| F4M-BTLCM2B | 2.0mm LC-M Boot |
| F4M-BTLCM12B | 1.2mm LC-M Boot |



| BOOT COLOR F4M-BTLCM9B | |
|------------------------|---------|
| 1 | Blue |
| 2 | Black |
| 3 | Green |
| 5 | Aqua |
| 8 | White |
| 11 | Magenta |

| BOOT COLOR F4M-BTLCM-2S | |
|-------------------------|--------|
| 1 | Blue |
| 7 | Yellow |
| 8 | White |

| BOOT COLOR F4M-BTLCM12B | |
|-------------------------|-------|
| 1 | Blue |
| 3 | Green |
| 8 | White |



| BOOT COLOR | |
|------------|--------|
| 1 | Blue |
| 2 | Black |
| 3 | Green |
| 4 | Beige |
| 5 | Aqua |
| 6 | Red |
| 7 | Yellow |
| 8 | White |
| 0 | Gray |

| SMALL FORM FACTOR BOOTS | | |
|-------------------------|--|--------------------------------|
| BOOT CODE | | DESCRIPTION |
| LC BOOTS | | |
| F4M-BTLC9B | | 900um LC Boot |
| F4M-BTLCDX9 | | 900um LC Boot for DX Connector |
| F4M-BTLC12B | | 1.2mm LC Boot |
| F4M-BTLC2B | | 2.0mm Standard LC Boot |
| F4M-BTLC19L2R | | 2.0mm Round short 19mm LC Boot |
| F4M-BTLC3B | | 3.0mm Standard LC Boot |
| F4M-BTLC2BFL | | 2.0mm Bendable LC Boot |
| F4M-BTLC3BFL | | 3.0mm Bendable LC Boot |
| F4M-BTLC245D | | 45° Angled LC Boot |
| F4M-BTLC290D | | 90° Angled LC Boot |

SANWA TECH Offers a 1.6mm Crimp Ring that is compatible with all 2.0mm boots.



| | TIA/EIA,IEC& GR-326-CORE | RoHS & REACH | Flammability rating: UL 94V-0 |
|-----------------------------|--------------------------|--------------|-------------------------------|
| Push Pull Series Connectors | • | • | • |
| Roll Over Connector | • | • | • |
| Simplex & Duplex Connectors | • | • | • |
| PM Connectors | • | • | • |
| LC Adapter Series | • | • | • |
| Shutters | | • | • |

SANWA's LC Series delivers the highest optical performance with compact innovative engineering and new designs. We use the highest industry standards to meet and exceed our customers' performance expectations. Our talented and dedicated engineering department's ability to design and manufacture new products, as well as customization of existing products truly sets us apart from the competition.

Application

- Datacom and Telecom
- Medium and long distance optical fiber transmission lines
- Subscriber's optical fiber transmission lines

OVER THE WORLD

SANWA product selection offers a wide range of high-quality and reliable solutions for various applications. Fiber optic technology is known for its ability to transmit data at incredibly fast speeds over long distances, making it ideal for telecommunications, networking, and data center environments.



USA
EUROPE
TAIWAN
THAILAND
JAPAN



SANWA Technologies, Inc.

www.sanwa-tech.com

sales@snwtech.com

Americas Sales-TX
4012 Preston Rd.
Plano, TX 75093
Tel: +1 (972)-503-3031
Fax: +1 (972)-503-3032

Americas Sales-MA
287 Turnpike Road
Westborough, MA 01581
Tel: +1 (508)-616-9500
Fax: +1 (508)-616-9600

Europe Sales
Aleja Armii Krajowej 61, Bud.
C, 50-541 Wrocław, PL
Tel: +48 71 7277237
Fax: +48 71 7939911

Asia Sales
13F, Changxing Rd., Luzhou
Dist., New Taipei City 247,
Taiwan (R.O.C.)
Tel: +886 939512000
Fax: +886 2 8285450

Catalog 2025

All information provided in this document is subject to legal disclaimers. SANWA Technologies, Inc. © 2025. All rights reserved.

