



SANWA
TECHNOLOGIES

LC SERIES

High-Density Data Centers Connections

We Create, We Customize, We Connect





SANWA

T E C H N O L O G I E S

Providing engineering excellence, connecting you and beyond.

SANWA Technologies Co., Ltd. (formerly Sanwa Denki Kogyo Co., Ltd.) was established in 1947 and has since become a renowned manufacturer of communication and connectivity solutions, specializing in the global optical communications market. With over 75 years of innovation and engineering excellence, SANWA has developed and manufactured high-quality connectivity solutions and components to enhance the performance of optical networks both today and for the future.

Manufacturers designing products since 1947.

SANWA specializes in optical solutions that serve a broad range of international customers within the Telecom, Enterprise, Datacom, Premise wiring, CATV, OEM, Utility, Municipality, Security, and Aerospace/Military markets. With over 40 years of experience in fiber optic components and passive assembly manufacturing, we offer a variety of products and custom solutions tailored to your needs.

Our Vision

For over 75 years, SANWA has sought to establish relationships that are beyond transactional. Diligently collaborating on both custom and standard products with expeditious local support. Over time, we have transformed the traditional Japanese manufacturing philosophy, Monozukuri, exemplified in our everyday pursuit of manufacturing thoughtfulness, and equally focus on all aspects of product delivery: quality, time, and service.

ADVANCING TOGETHER, FORGING THE FUTURE

At SANWA Technologies, we take great pride in our world-class manufacturing facilities that empower us to deliver high-quality products to our valued customers.

With two state-of-the-art factories, strategically located in Tokyo, Japan, and Ayutthaya, Thailand, we strive for excellence through cutting-edge technology, precision engineering, and a dedicated focus on quality. Each facility serves a unique purpose, allowing us to meet the diverse needs of our global clientele.

Japan Hachioji Factory: Leading Innovation and Research

Our Hachioji factory, nestled in the western part of Tokyo, is the epitome of innovation and research. Equipped with the latest advancements in manufacturing technology, this facility drives our relentless pursuit of excellence. Our team of seasoned experts leads research and product development, ensuring that SANWA Technologies remains at the forefront of industry advancements. The factory also houses a robust QA, QC, and General Qualification Lab, where every product undergoes stringent testing to meet the highest quality standards. With a focus on low-volume and BCP production, as well as automated MT production and active device production, our Hachioji factory is a hub of progress and ingenuity.



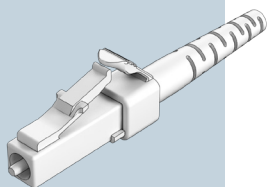
Thailand Ayutthaya Factory: Powering High-Volume Production

Nestled in Ayutthaya, Thailand, our second manufacturing facility is a powerhouse dedicated to high-volume production. With a sharp focus on efficiency and precision, this factory houses cutting-edge equipment for high-volume injection molding and precision assembly and testing. Quality is paramount, and our dedicated QA and QC Lab ensures that each product meets our stringent quality guidelines. We also prioritize tooling maintenance and repair, guaranteeing optimal performance and precision throughout the manufacturing process. For critical processes that demand a controlled environment, our Thailand factory boasts a semi-clean room, enabling us to deliver products with unparalleled purity and accuracy.



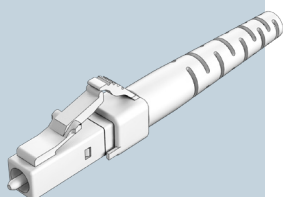


LC-UPC/APC
UNIBODY
CONNECTOR



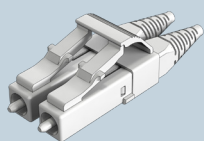
CODE		TYPE		FERRULE I.D.		HOUSING		BOOT		BOOT COLOR	
CN-LCUE	Elite Unibody UPC	SX	Simplex	125	SM 125µm	1	Blue	1	900µm	1	Blue
CN-LCUAE	Elite Unibody APC	DX	Duplex	125L	SM 125µm Low Loss	3	Green	2	2.0mm	2	Black
CN-LCU	Unibody UPC			1255	SM 125.5µm	4	Beige	6	3.0mm	4	Beige
CN-LCUA	Unibody APC			126	SM 126µm					8	White
				127	MM 127µm						

LC CONNECTOR
STANDARD
MULTIPIECE



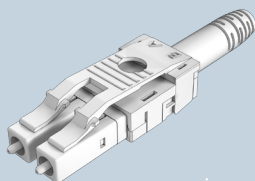
CODE		TYPE		FERRULE I.D.		HOUSING		BOOT		BOOT COLOR	
CN-LCPA	Preassembled	SX	Simplex	125	125µm	1	Blue	1	900µm	1	Blue
CN-LCUK	Unassembled	DX	Duplex	125L	125µm Low Loss	2	Black	2	2.0mm Standard	2	Black
CN-LCAPA	APC Preassembled			1255	125.5µm	3	Green	2B	2mm Bendable Boot	3	Green
CN-LCAUK	APC Unassembled			126	126µm	4	Beige	4	2.0mm short 19mm	4	Beige
				127	127µm	5	Aqua	6	3.0mm Standard	5	Aqua
				000	No Ferrule Opt.					8	White

LC-M CONNECTOR



CODE		TYPE		FERRULE I.D.		HOUSING		BOOT		BOOT COLOR	
CN-LCMPAE	Elite LC-M	SX	Simplex	125	SM 125µm	1	Blue	1	900µm	1	Blue
CN-LCMPAAE	Elite LC-M APC	DX	Duplex	125L	SM 125µm Low Loss	3	Green	12	1.2mm	2	Black
CN-LCMPA	Pre-Assembled			1255	SM 125.5µm	4	Beige	2	2.0mm	3	Green
CN-LCMUK	Unassembled			126	SM 126µm			6	3.0mm	4	Beige
CN-LCMPAA	Pre-Assembled APC			127	MM 127µm					8	White
CN-LCMUKA	Unassembled APC			000	No Ferrule Opt.						

LC UNIBOOT ROLL
OVER CONNECTOR
PRE-ASSEMBLED



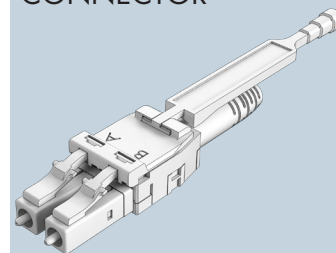
CODE		FERRULE I.D.		HOUSING		BOOT		BOOT	
SLCUT-2PHPR	LC Uniboot Roll Over Connector	1255SM	SM 125.5µm	BL	Blue	20	2.0mm	8	White
		127MM	MM 127µm	AQ	Aqua	30	3.0mm		
				HV	Heather Violet	50	5.0mm		
				LG	Lime Green				





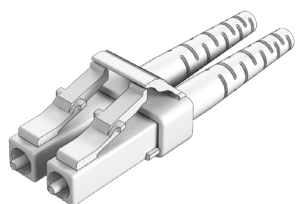
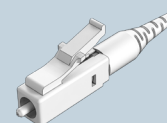
CODE		FERRULE I.D.		HOUSING		BOOT		BOOT COLOR		TAB	
SLCUPL-2PHPR	LC Push-Pull Uniboot	1255	SM 125.5µm	BL	Blue	20	2.0mm	-	White	-	No tab
		127	MM 127µm	GR	Green	30	3.0mm			T5	50mm
				AQ	Aqua						
				HV	Heather Violet						
				LG	Lime Green						

LC PUSH-PULL
UNIBOOT
CONNECTOR



CODE		FERRULE I.D.		HOUSING		BOOT		BOOT COLOR	
SLC-PHPR	Pre-Assembled	1255SM	SM 125.5µm	BL	Blue	09P1	900µm	GR	Green
		1255AP	APC 125.5µm	GR	Green	20P1	2.0mm	-	White
						30P1	3.0mm		

LC PM CONNECTOR



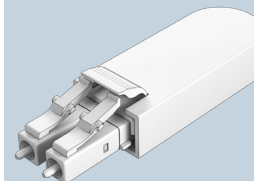
CODE			COLOR	
CN-LCMINIDXCPL	LC Mini Duplex Clip		T	Transparent
CN-LCDXCPL-T	LC Simplex to Duplex Converter Clip		S	Specify

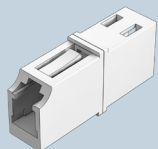
SPECIALTY CLIPS
HIGH DENSITY
LC SOLUTION



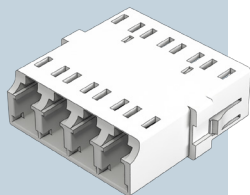
CODE	TYPE		CONNECTOR TYPE		FIBER		COLOR	
LB-LCK	SM	Singlemode	AA	LC/UPC	9	900µm Fiber	2	Black MM
	MM	Multimode	BB	LC/APC				

LC LOOPBACK
MODULES

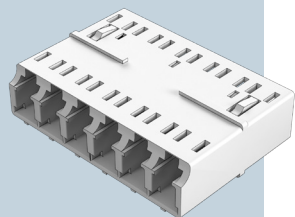


LC ADAPTER
STANDARD

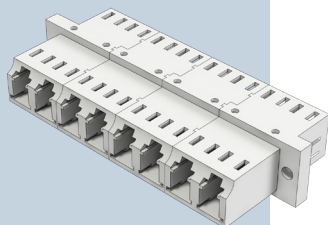
CODE	TYPE		COLOR		SLEEVE TYPE	
AD-LC	SX	Simplex	1	Blue	1	Zirconia Ceramic
		Duplex	2	Black	2	Phosphor Bronze
	DX	Duplex	3	Green	3	Elite Zirc. Ceramic (Ultra Low Loss)
			4	Beige		
			5	Aqua		

LC ADAPTER
SC FOOTPRINT
SNR/JUN

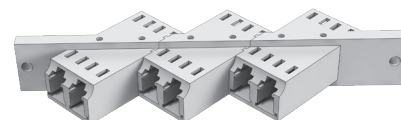
CODE	TYPE		COLOR		SLEEVE TYPE		FLANGE	
AD-LC	DXSJ	Duplex	1	Blue	1	Zirconia Ceramic	FL	With Flange
		Duplex	2	Black	2	Phosphor Bronze	NF	No Flange
	QDSJ	Quad	3	Green	3	Elite Zirc. Ceramic (Ultra Low Loss)		
			4	Beige				
			5	Aqua				
	CL	F4M	Transparent					

LC ADAPTER
MULTIPORT

CODE	TYPE		COLOR		SLEEVE TYPE	
SLC	6ASP	6 Ports	BL	Blue	ZR	Zirconia Ceramic
			BK	Black		
			GR	Green		
			BE	Beige		
			AQ	Aqua		

LC STACKABLE
SERIES

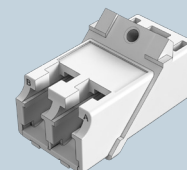
CODE	TYPE		COLOR		#PORTS		#ROWS	
AD-STKLC	AN	Angled	1	Blue	N6	6 Ports	M1	1 Row
		Duplex	3	Green	N8	8 Ports	M2	2 Row
	ST	Straight	4	Beige	N12	12 Ports	M3	3 Row
			5	Aqua	N..	~ Ports	S	Specify
			HV	Heather Violet	N24	24 Ports		
					S	Specify		





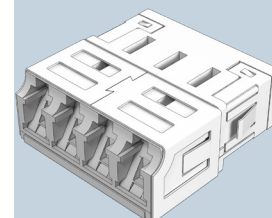
CODE	TYPE		HOUSING		SLEEVE TYPE		INTERNAL SHUTTER	
SLC	2A	Duplex	45M	Metal	ZR	Zirconia Ceramic	SH	With Shutter
							B	No Shutter

LC 45 DEGREE EMI SHIELDING ADAPTER



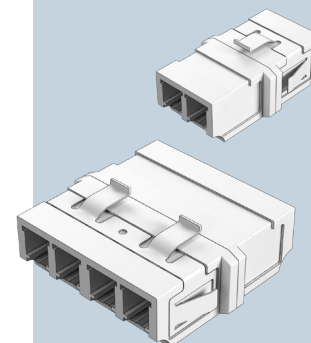
CODE	TYPE		HOUSING		SLEEVE TYPE		INTERNAL SHUTTER	
SLC	2ASP	Duplex	BL	Blue	ZR	Zirconia Ceramic	SSH2	With Shutter
			GR	Green				
			AQ	Aqua				
			HV	Heather Violet				
			LG	Lime Green				

ALL-IN-ONE LC ADAPTER



CODE	TYPE		COLOR		SLEEVE TYPE	
AD-LCSF	DX	Duplex	1	Blue	1	Zirconia Ceramic
			2	Black	2	Phosphor Bronze
			3	Green	3	Elite Zirc. Ceramic (Ultra Low Loss)
			4	Beige		
			5	Aqua		

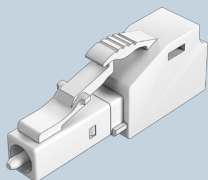
LC SNUG FIT





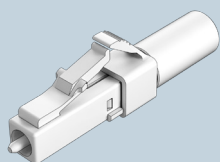
ATTENUATORS
& TERMINATORS

ATTENUATORS



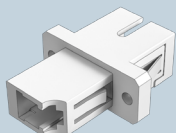
CODE		TYPE		CONNECTOR TYPE		ATTENUATION LEVEL	
AT	Doped Fiber Attenuators	1	Standard	LC	LC UPC	01	1dB
		2	Special	LCA	LC APC	03	3dB
		S	Specify			04	4dB
						05	5dB
						07	7dB
						08	8dB
						09	9dB
						10	10dB
						12	12dB
						15	15dB
						20	20dB
						25	25dB
						30	30dB

TERMINATORS



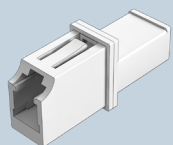
PRODUCT	CONNECTOR TYPE	
TM	LC	LC UPC
	LCA	LC APC

SC-LC HYBRID
ADAPTER



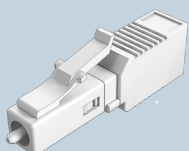
CODE	SLEEVE	
ADH-LCSC	1	Zirconia

LC-MU HYBRID
ADAPTER



CODE	SLEEVE	
ADH-LCMU	1	Zirconia
	2	Phosphor Bronze

LC-MU
CONVERSION
PLUG



CODE	COLOR	OPTICAL FIBER AND WAVELENGTH
SCV-LCMU-SM-C	BL Blue	SM10/125 1.31μm • 1.55μm
SCV-LCMU-50/125-C	BE Beige	GI50/125 1.31μm
SCV-LCMU-62.5/125-C	BE Beige	GI62.5/125 1.31μm

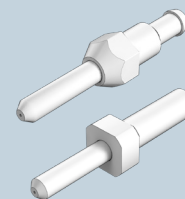


FERRULE		INNER DIAMETER		FLANGE	
F-MU-S	MU Connectors Singlemode	125	125µm	NF	No Flange
F-LC-S	LC Connectors Singlemode	1255	125.5µm	FL	MU Flange
		126	126 µm		

FERRULE		INNER DIAMETER		FLANGE	
F-MU-M	MU Connectors Multimode	127	127µm	NF	No Flange
F-LC-M	LC Connectors Multimode			FL	MU Flange

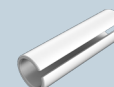
CODE		INNER DIAMETER		LENGTH	
S-ZR	Zirconia Sleeve	125	1.25mm	LC	6.8mm

ZIRCONIA FERRULES LC-MU SINGLEMODE



ZIRCONIA FERRULES LC-MU MULTIMODE

ZIRCONIA ADAPTERS SLEEVES



ZIRCONIA FERRULES

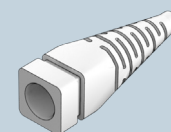
SMALL FORM FACTOR BOOTS		BOOT COLOR
BOOT CODE	DESCRIPTION	

LC BOOTS			
F4M-BTLC9B	900µm LC Boot	1	Blue
F4M-BTLCDX9	900um LC Boot for DX Connector	2	Black
F4M-BTLC12B	1.2mm LC Boot	3	Green
F4M-BTLC2B	2.0mm Standard LC Boot	4	Beige
F4M-BTLC19L2R	2.0mm Round short 19mm LC Boot	5	Aqua
F4M-BTLC3B	3.0mm Standard LC Boot	6	Red
F4M-BTLC2BFL	2.0mm Bendable LC Boot	7	Yellow
F4M-BTLC3BFL	3.0mm Bendable LC Boot	8	White
F4M-BTLC245D	45° Angled LC Boot	9	Gray
F4M-BTLC290D	90° Angled LC Boot		

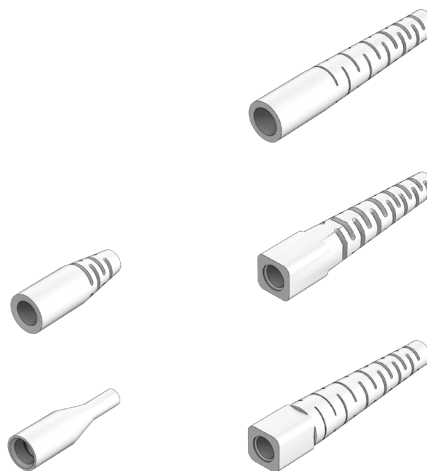
LC-M BOOTS (SPECIFIC)	
F4M-BTLCM9B	900um LC-M Boot
F4M-BTLCM2B	2.0mm LC-M Boot
F4M-BTLCM3B	3.0mm LC-M Boot

Standard LC connectors crimps works with 1.6,1.8 and 2mm cables
For LCM and standard LC with short boots is offered the 32mm version

LC CRIMP OPTIONS				
HEATSHRINK	C	L	CRIMP SIZE	CRIMP & EYELET
F4M-CRLC2-19-7B		19mm	2.0mm	-
F4M-CRLC2-19-8B		19mm		
F4M-CRLC2-32-7B		32mm	2.0mm	-
F4M-CRLC2-32-8B		32mm		
F4M-CRLC2-7B		42mm	2.0mm	-
F4M-CRLC2-8B		42mm		
F4M-CRLC3-7B		42mm	3.0mm	F4M-CR3LC
F4M-CRLC3-8B		42mm		



LC BOOTS



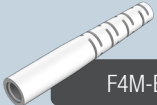


LC BOOTS



F4M-BTLCDX9

LC Multi-piece - Boot 900um



F4M-BTLC12B

LC Unibody connector - 1.2mm LC Boot



F4M-BTLC2B

STD LC connectors /LC Unibody connector
2.0mm Boots



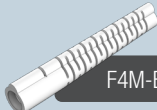
F4M-BTLC3B

STD LC connectors /LC Unibody connector
3.0mm Boots



F4M-BTLC19L2R

STD LC connectors /LC Unibody connector
19mm short boot for 2.0mm



F4M-BTLCxBFL

STD LC connectors /LC Unibody connector
Flexible bendable boot - 2.0mm/3.0mm



F4M-BTLCx45D

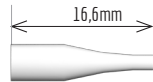
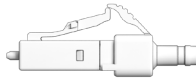
STD LC connectors /LC Unibody connector
45° Angled LC boot for 2.0mm/ 3.0mm



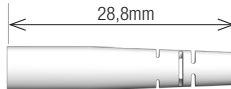
F4M-BTLC290D

STD LC connectors /LC Unibody connector
90° Angled LC boot for 2.0mm/3.0mm

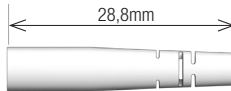
MULTIPIECE



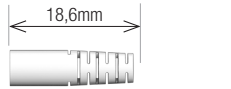
F4M-BTLCDX9
LC Multi-piece - Boot 900um



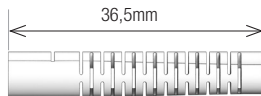
F4M-BTLC12B
LC Unibody connector - 1.2mm LC Boot



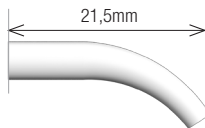
F4M-BTLC2B
STD LC connectors /LC Unibody connector
2.0mm Boots



F4M-BTLC3B
STD LC connectors /LC Unibody connector
3.0mm Boots



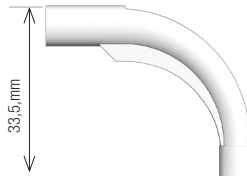
F4M-BTLC19L2R
STD LC connectors /LC Unibody connector
19mm short boot for 2.0mm



F4M-BTLCxBFL
STD LC connectors /LC Unibody connector
Flexible bendable boot - 2.0mm/3.0mm

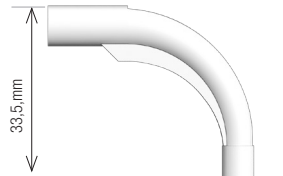
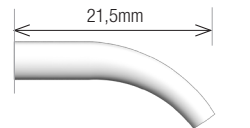
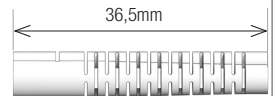
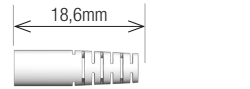
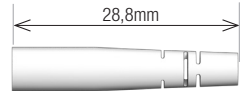
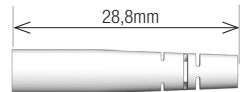
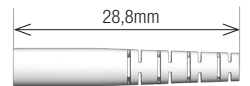


F4M-BTLCx45D
STD LC connectors /LC Unibody connector
45° Angled LC boot for 2.0mm/ 3.0mm



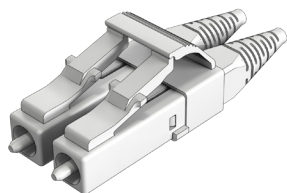
F4M-BTLC290D
STD LC connectors /LC Unibody connector
90° Angled LC boot for 2.0mm/3.0mm

UNIBODY

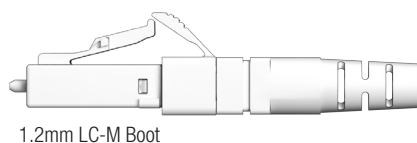
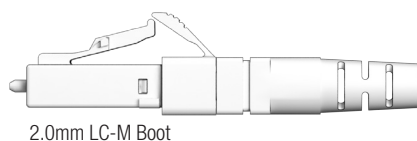
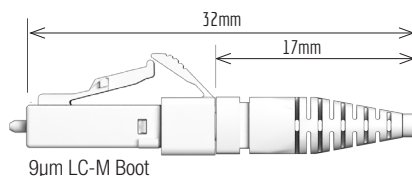




LC-M BOOTS



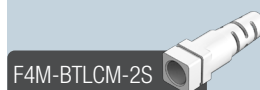
LC-M BOOTS (SPECIFIC)	
F4M-BTLCM9B	900um LC-M Boot
F4M-BTLCM2B	2.0mm LC-M Boot
F4M-BTLCM12B	1.2mm LC-M Boot



BOOT COLOR F4M-BTLCM9B	
1	Blue
2	Black
3	Green
5	Aqua
8	White
11	Magenta

BOOT COLOR F4M-BTLCM-2S	
1	Blue
7	Yellow
8	White

BOOT COLOR F4M-BTLCM12B	
1	Blue
3	Green
8	White



BOOT COLOR	
1	Blue
2	Black
3	Green
4	Beige
5	Aqua
6	Red
7	Yellow
8	White
0	Gray

SMALL FORM FACTOR BOOTS		
BOOT CODE		DESCRIPTION
LC BOOTS		
F4M-BTLC9B		900um LC Boot
F4M-BTLCDX9		900um LC Boot for DX Connector
F4M-BTLC12B		1.2mm LC Boot
F4M-BTLC2B		2.0mm Standard LC Boot
F4M-BTLC19L2R		2.0mm Round short 19mm LC Boot
F4M-BTLC3B		3.0mm Standard LC Boot
F4M-BTLC2BFL		2.0mm Bendable LC Boot
F4M-BTLC3BFL		3.0mm Bendable LC Boot
F4M-BTLC245D		45° Angled LC Boot
F4M-BTLC290D		90° Angled LC Boot

SANWA TECH Offers a 1.6mm Crimp Ring that is compatible with all 2.0mm boots.



	TIA/EIA,IEC& GR-326-CORE	RoHS & REACH	Flammability rating: UL 94V-0
Push Pull Series Connectors	•	•	•
Roll Over Connector	•	•	•
Simplex & Duplex Connectors	•	•	•
PM Connectors	•	•	•
LC Adapter Series	•	•	•
Shutters		•	•

SANWA's LC Series delivers the highest optical performance with compact innovative engineering and new designs. We use the highest industry standards to meet and exceed our customers' performance expectations. Our talented and dedicated engineering department's ability to design and manufacture new products, as well as customization of existing products truly sets us apart from the competition.

Application

- Datacom and Telecom
- Medium and long distance optical fiber transmission lines
- Subscriber's optical fiber transmission lines

OVER THE WORLD

SANWA product selection offers a wide range of high-quality and reliable solutions for various applications. Fiber optic technology is known for its ability to transmit data at incredibly fast speeds over long distances, making it ideal for telecommunications, networking, and data center environments.



USA
EUROPE
MIDDLE EAST
TAIWAN
THAILAND
JAPAN



SANWA Technologies, Inc.

www.sanwa-tech.com

sales@snwtech.com

Americas Sales-CA
9685 Via Excelencia, Suite 106,
San Diego, CA 92126
Tel: +1-(858)-397-2585
Fax: +1-(858)-397-2584

Americas Sales-TX
4012 Preston Rd.
Plano, TX 75093
Tel: +1 (972)-503-3031
Fax: +1 (972)-503-3032

Americas Sales-MA
287 Turnpike Road
Westborough, MA 01581
Tel: +1(508)-616-9500
Fax: +1(508)-616-9600

Europe Sales
Aleja Armii Krajowej 61, Bud.
C, 50-541 Wrocław, PL
Tel: +48 71 7277237
Fax: +48 71 7939911

MEA Sales
DP A6, 108, Silicon Oasis
Free Zone Dubai,
United Arab Emirates
Tel: +971 4 3344970
Fax: +971 4 3344971

Asia Sales
13F, Changxing Rd., Luzhou
Dist., New Taipei City 247,
Taiwan (R.O.C.)
Tel: +886 939512000
Fax: +886 2 8285450

Catalog 2023

All information provided in this document is subject to legal disclaimers. SANWA Technologies, Inc. © 2023. All rights reserved.

