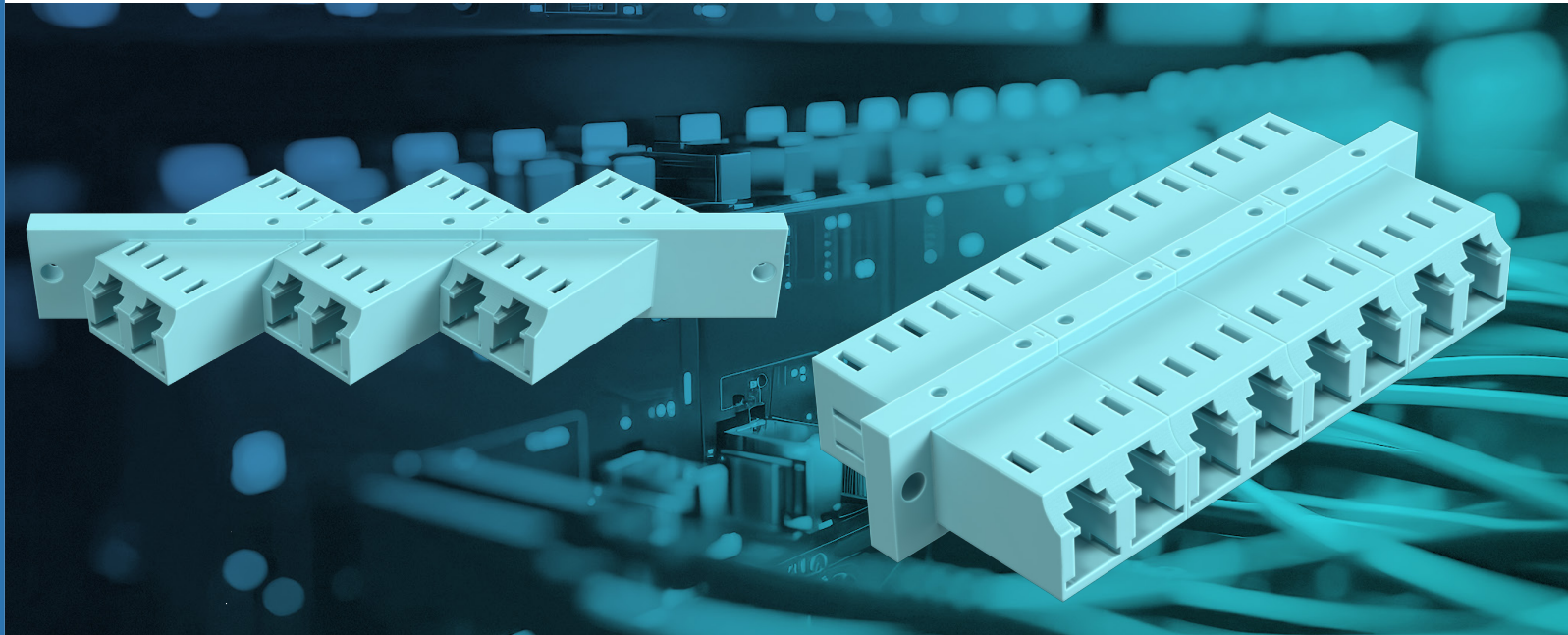


# LC STACKABLE ADAPTERS

AVAILABLE COLORS



HIGH DENSITY | ULTRA FLEXIBLE | STRAIGHT AND ANGLED



Designing and building a smaller high-density environment requires much less capital than a larger low-density facility and will enable you to operate your data center with significant savings from power consumption and other areas over time, while also improving overall performance.

Body Material	UL-Rated Plastic
Typical Insertion LOSS	Zirconia <=0.15dB
Durability	< 0.2dB change, 500MATING
Operating Temperature	-40°C~+70°C

## AVAILABLE OPTIONS

- Duplex and Quad type available
- Vertical / horizontal latch options available

## CHARACTERISTICS

- Ultra Flexible: Can stack both multiple rows and columns, fully comply with your need.
- High Density: 1U chassis can accommodate 180 ports LC adapters.
- Blue, Green, Black, Aqua, Beige, and Magenta are available; Other colors per your request.
- RoHS and Reach Compliant.

AD-SLC	AN	Angled
	ST	Straight



## LC ADAPTERS ARE ONE PIECE DESIGN

These Adapters offer 45° or 90° solution fitting your needs in your high density environment in both vertical or Horizontal solution and rows number.

PIONEERING CUSTOM FIBER OPTIC SOLUTIONS FOR YOUR UNIQUE NEEDS



Toll free number 1-855-SNW-TECH  
Please contact your local sales representative for further details or questions.

sales@snwtech.com  
www.sanwa-tech.com