

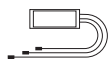
## KEY FEATURES

- High Extinction Ratio
- Small size
- High reliability
- Good channel-to-channel uniformity

## APPLICATIONS

- PON Systems
- Optical Networks
- FTTH Access Networks
- WDM Systems

## OTHER PACKAGES



Mini Modules



Devices



ABS Boxes



Plug in & LGX Packages

Telcordia GR-1209 core

Telcordia GR-1221 core

RoHS10 compliance

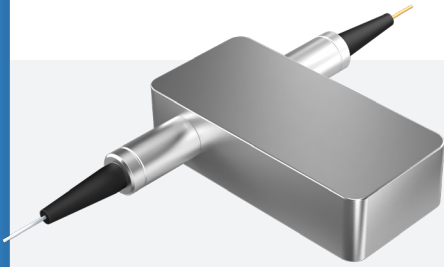
1×NPLC SPLITTER	PARAMETERS	UNIT	1×2	1×4	1×8	1×16	1×32	1×64
	Operating Wavelength	nm	1310 or 1550					
	Insertion Loss	dB	3.9	7.2	10.4	13.7	16.8	21
	Uniformity	dB	≤0.4	≤0.6	≤0.8	≤1.2	≤1.5	≤2.5
	PER	dB	≥20	≥20	≥18	≥18	≥18	≥16
	Return Loss	dB	≥55					
	Directivity	dB	≥55					
	Fiber Type		SM15/13-PS-U25 CORNING					
	Fiber Length	m	0.5 1.0 1.5 or Customer Requirement					
	Optical Average Power	mW	500					
Operating Temperature	°C	-5~+70						
Storage Temperature	°C	-40~+85						

2×NPLC SPLITTER	PARAMETERS	UNIT	2×2	2×4	2×8	2×16	2×32
	Operating Wavelength	nm	1310 or 1550				
	Insertion Loss	dB	4.2	7.8	11.2	14.2	17.3
	Uniformity	dB	≤0.6	≤1.2	≤1.4	≤1.8	≤2.0
	PER	dB	≥20	≥20	≥18	≥18	≥18
	Return Loss	dB	≥55				
	Directivity	dB	≥55				
	Fiber Type		SM15/13-PS-U25 CORNING				
	Fiber Length	m	0.5 1.0 1.5 or Customer Requirement				
	Optical Average Power	mW	500				
Operating Temperature	°C	-5~+70					
Storage Temperature	°C	-40~+85					

PIONEERING CUSTOM FIBER OPTIC SOLUTIONS FOR YOUR UNIQUE NEEDS

Toll free number 1-855-SNW-TECH  
 Please contact your local sales representative for further details or questions.

# 1X2 MECHANICAL OPTICAL SWITCH



## KEY FEATURES

- Unmatched Low Cost
- Low Optical Distortions
- High Isolation
- High Reliability
- Epoxy-Free Optical Path

The 1x2 fiber optic switch connects optical channels by directing or blocking an incoming optical signal into the output fiber. This is achieved using a patent pending opto-mechanical configuration and activated via an electrical control signal.

The switch has integrated electrical position sensors. The new material-based advanced design significantly reduces moving part position sensitivity, offering unprecedented high stability as well as unmatched low cost.

## APPLICATIONS

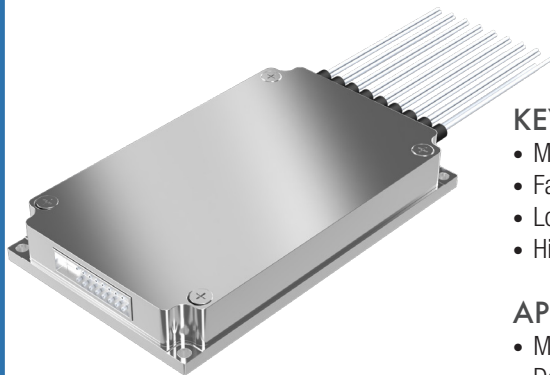
- Channel Blocking
- Configurable Add/Drop
- System Monitoring
- Instrumentation

PARAMETERS	SPECIFICATIONS	UNIT
Operating Wavelength	1260~1620(SM) 850(MM)	nm
Insertion Loss	≤0.6	dB
Wavelength Dependent Loss	≤0.25	dB
Polarization Dependent Loss	≤0.05	dB
Temperature Dependent Loss	≤0.20	dB
Return Loss	SM≥50 MM≥30	dB
CrossTalk	SM≥55 MM≥35	dB
Switch Time	≤8	ms
Repeatability	≤±0.02	dB
Durability	≥107	times
Operating Voltage	3 or 5	V
Switch Type	Non-Latching/Latching	
Operating Temperature	-20~ 70	°C
Storage Temperature	-40~ 85	°C
Optical Power	≤500	mW
Dimension	27.0L×12.0W×8.2H	mm

## PIN CONFIGURATIONS

TYPE	Optical Route	ELECTRIC DRIVE				STATE SENSOR			
		Pin 1	Pin 5	Pin 6	Pin 10	Pin 2-3	Pin 3-4	Pin 7-8	Pin 8-9
1×2	P1-P2	--	--	GND	V	Close	Open	Open	Close
	P1-P3	V	GND	--	--	Open	Close	Close	Open
Latching	P1-P2	--	--	--	--	Close	Open	Open	Close
	P1-P3	V	--	--	GND	Open	Close	Close	Open

# MEMS OPTICAL SWITCH



## KEY FEATURES

- Modular Design
- Fast Switching Time
- Low IL, Good Repeatability
- High reliability and stability

## APPLICATIONS

- MAN
- Data Center
- Fiber Sensing and Monitoring
- Instrumentation

## PIN CONFIGURATIONS

Pin No	Pin Assignment	Signal Type	Description
M3/M4			
1	D0	Input	Data bit (D0) (low-order)
2	D5	Input	Data bit (D5)
3	VCC	Power	Power Supply (DC5V,1.0A)
4	D7	Input	Data bit (D7) (high-order)
5	D6	Input	Data bit (D6)

Telcordia GR-1073 core

Telcordia GR-1221 core

PERFORMANCE SPECIFICATIONS (SINGLE MODE)	PARAMETERS	UNIT	MEMS 1×N-SM
	Working Wavelength	nm	Oband
	Testing Wavelength	nm	1310
	Insertion Loss	dB	@CWL Single-band≤1.8 (32<N≤64)
	WDL	dB	≤0.3 (N≤64)
	PDL	dB	≤0.15
	Return Loss	dB	≥45
	Crosstalk	dB	≥50
	Repeatability	dB	≤±0.05
	Switching Time	ms	≤15
	Durability	times	≥109
	Input Optical Power	mW	≤500
	Operating Voltage	V	DC5V±10%
	Operating Current	mA	≤250 (16<N≤64)
	Operating Temp.	°C	-20 ~ +85
	Storage Temp.	°C	-40 ~ +85
Dimension(L×W×H)	mm	M3: 90×55×12 ±0.2 (16<N≤64, Loose Tube)	
Fiber Type	-	Corning G657A1	
Cable Type	-	900um loose tube, Hytrel	
Cable Color	-	White	
Fiber Length	m	1±0.1	
Connector	-	FC/APC	