

We Create, We Customize, We Connect

#ExcellenceAccelerated



# SC AUTO SHUTTER CONNECTOR & ADAPTER

LASER PROTECTION | AUTO SHUTTER | IDEAL FOR FTTX SOLUTIONS

AVAILABLE COLORS



Laser Protection



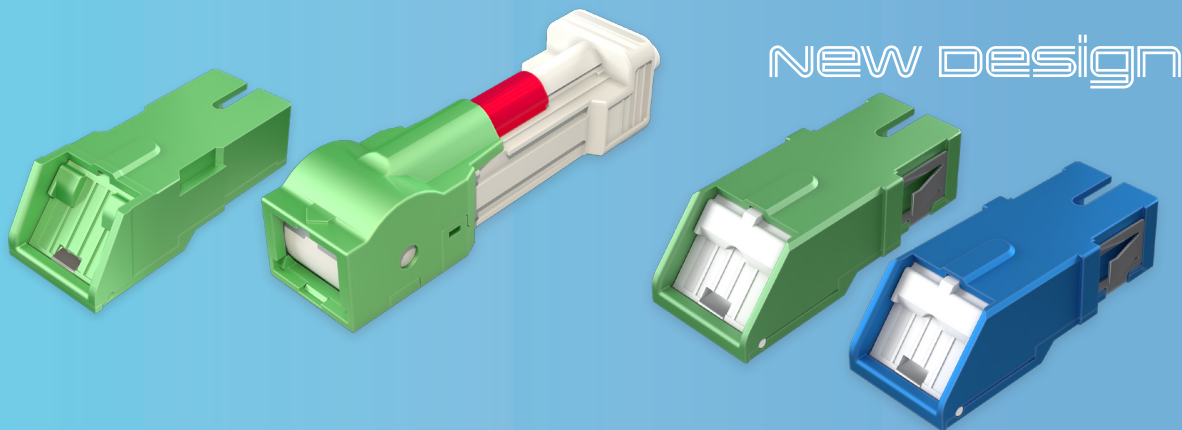
Dust Protection



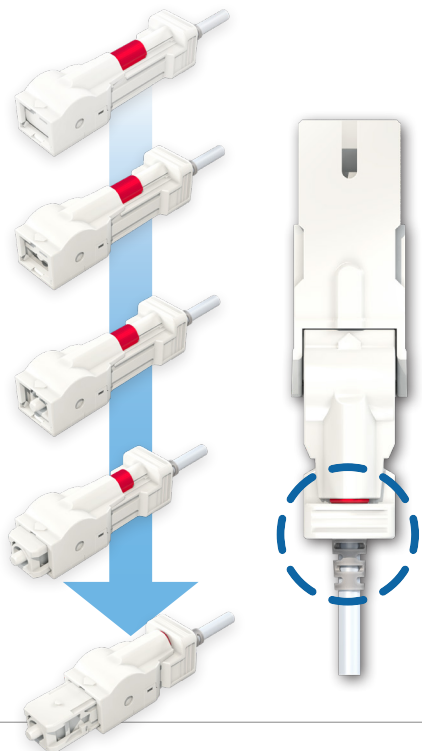
Patent No.

US 8,317,407 B2

US 9,052,471 B2

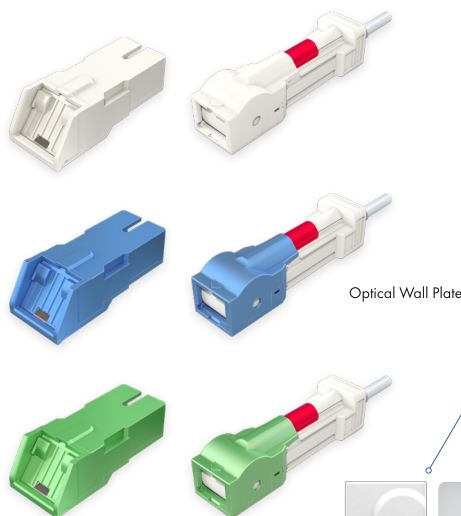


THE RED MARK EASILY ALLOWS YOU TO CHECK IF THE CONNECTOR IS FULLY INSERTED



## FEATURES

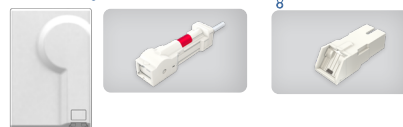
- SC Simplex
- 3.0mm boot for connectors
- IEC 60529 IP5x rated dust protection compliant for adapters
- Insertion loss (typical); 0.2dB or less
- UL94V-0 flammability grade
- RoHS and REACH compliant
- IEC61754-4, TIA/EIA, GR-326-CORE compliant



## APPLICATIONS

- Fiber to the Home (FTTH)
- Telecommunication Networks
- LANs, CATV

OPTICAL LAN TEL LINE



SANWA Technologies, Inc.

www.sanwa-tech.com

sales@snwtech.com



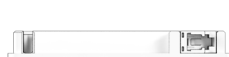
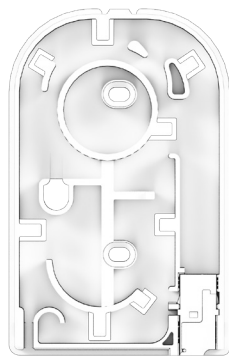
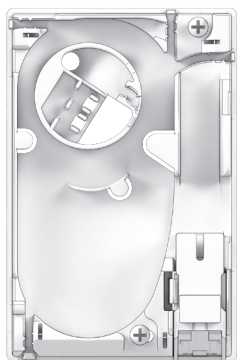
## WALL OUTLET

LASER PROTECTION | AUTO SHUTTER | IDEAL FOR FTTH SOLUTIONS



### SC TYPE

### LC TYPE



### FEATURES

- Customize/Design outlet upon request
- SC Simplex and LC Simplex/Duplex are available
- IEC 60529 IP5x rated dust protection compliant for adapters
- Insertion loss (typical); 0.2dB or less
- UL94V-0 flammability grade
- RoHS and REACH compliant
- EC61754-4, TIA/EIA, GR-326-CORE compliant

### APPLICATIONS

- Fiber to the Home (FTTH)
- Telecommunication Networks

Toll free number 1-855-SNWA-TECH

Please contact your local sales representative for further details or questions.

