

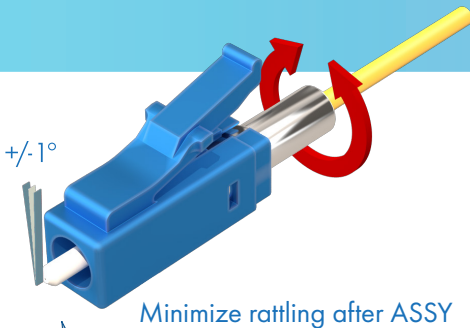
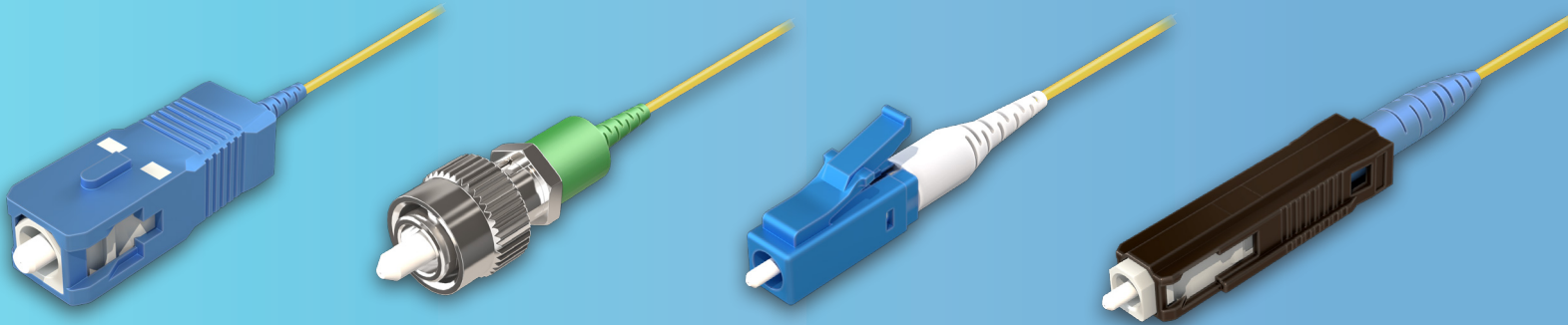
We Create, We Customize, We Connect

#ExcellenceAccelerated



PM CONNECTOR SERIES

HIGH PERFORMANCE | SIMPLE & COMPACT | 360° INFINITELY TUNABLE



AVAILABLE OPTIONS

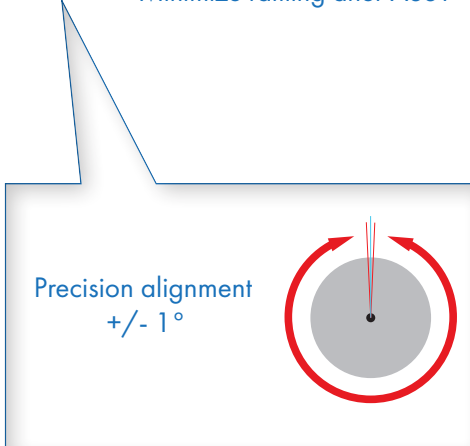
- LC, FC, SC and MU available
- UPC and APC available
- 0.9mm, 2.0mm and 3.0mm boot

FEATURES

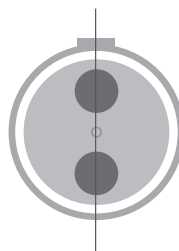
- Insertion loss (typical); 0.2dB or less
- Return loss (typical); PC = 55dB (UPC), 60dB (APC)
- Extinction ratio; 25dB or more
- UL94V-0 flammability grade
- RoHS and REACH compliant
- IEC, TIA/EIA GR-326-CORE compliant

APPLICATIONS

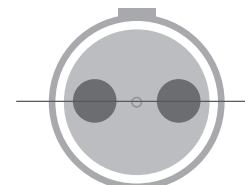
- Telecommunication Networks
- LANs, CATV
- Medical
- Fiber Optic Sensing
- Fiber Laser
- Optical Isolator
- Optical Amplifier



SLOW AXIS ALIGNED



FAST AXIS ALIGNED



Toll free number 1-855-SNW-TECH

Please contact your local sales representative for further details or questions.



SANWA Technologies, Inc.

www.sanwa-tech.com

sales@snwtech.com

Americas Sales-CA
9685 Via Excelencia, Suite 106, 4012 Preston Rd.
San Diego, CA 92126
Tel: +1-(858)-397-2585
Fax: +1-(858)-397-2584

Americas Sales-TX
Plano, TX 75093
Tel: +1 (972)-503-3031
Fax: +1 (972)-503-3032

Americas Sales-MA
287 Turnpike Road
Westborough, MA 01581
Tel: +1(508)-616-9500
Fax: +1(508)-616-9600

Europe Sales
Aleja Armii Krajowej 61, Bud.
C, 50-541 Wrocław, PL
Tel: +48 71 7277237
Fax: +48 71 7939911

MEA Sales
DP A6, 108, Silicon Oasis
Free Zone Dubai,
United Arab Emirates
Tel: +971 4 3344970
Fax: +971 4 3344971

Asia Sales
13F, Changxing Rd., Luzhou
Dist., New Taipei City 247,
Taiwan (R.O.C.)
Tel: +886 939512000
Fax: +886 2 8285450



POLARIZATION MAINTAINING (PM) FIBER

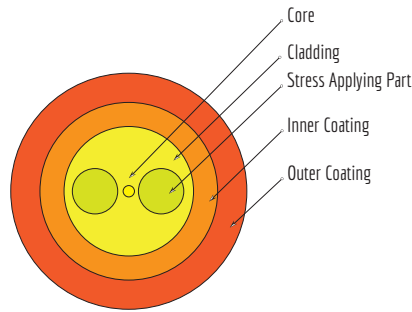
PM fiber is designed to propagate only one polarization of the input light. In polarization maintaining fiber, the polarization of linearly-polarized light waves launched into the fiber is maintained during propagation, with little or no cross-coupling of optical power between the polarization modes.

FEATURES

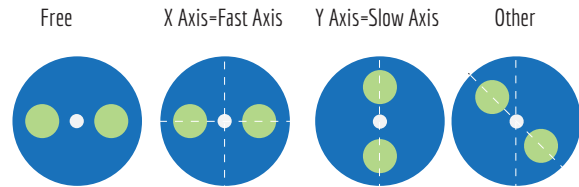
- Low Insertion Loss
- High Return Loss & ER
- High Stability and reliability

APPLICATIONS

- Fiber Amplifier
- DWDM system
- Testing Instrument
- Fiber Lasers

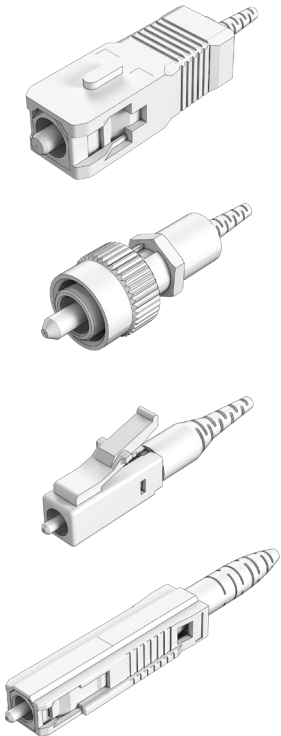
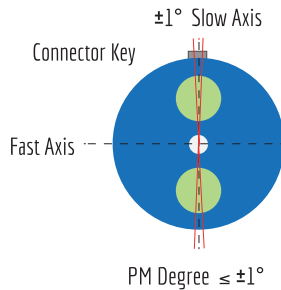


POLARIZATION MODES



PM FIBER PATCHCORDS

PARAMETER	SPECIFICATIONS				UNIT
Connector Type	FC/UPC, SC/UPC, LC/UPC, FC/APC, SC/APC, LC/APC				/
Wavelength	1310, 1550	980, 1060	850	780	nm
Insertion Loss	≤0.3	≤0.5	≤0.8	≤0.8	dB
Return Loss(UPC)	≥50				dB
Return Loss(APC)	≥60				dB
Extinction Ratio at 23°C	≥23	≥23	≥23	≥23	dB
Fiber Type	PM1310, PM1550	PM980	PM850	PM780	/
Key Orientation	Slow Axis				/
Axis Alignment	±1				deg
Operating temperature	-20~+70				°C



CODE	WAVELENGTH	KEY WIDTH (FOR FC TYPE)	CONNECTOR TYPE	BUFFER TYPE	FIBER LENGTH	FIBER TYPE						
F4M -PMP	78	780nm	R	2.02 mm	0	None	25	250µm Bare Fiber	05	0.5 m	PF	Panda Fiber
	85	850 nm			A	SC/UPC	9L	900µm Loose Tube	10	1m	S	Specify
	80	980 1060 nm			B	SC/APC	9T	900µm Tight buffer	S	Specify		
	35	1310 1550 nm			C	FC/UPC	2M	2mm Cable				
	S	Specify			D	FC/APC	3M	3mm Cable				
					E	LC/UPC	S	Specify				
					Q	LC/APC						
					S	Specify						