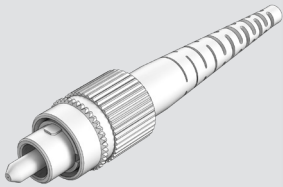




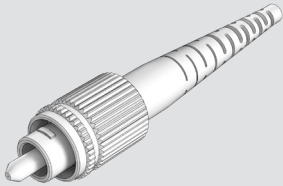
FC CONNECTORS

FC HIGH SPEC
PRE-ASSEMBLED



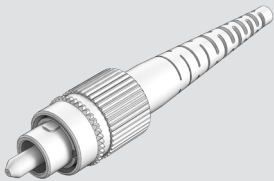
CODE		KEY		FERRULE I.D.		BOOT		COLOR	
CN-FCE	Elite Connector	1	Standard	1255	SM: 125.5µm	1	900µm Smooth Fiber Short	1	Blue
CN-FC	High Spec Connector	2	Key Ring	126	SM: 126µm	2	900µm High Spec Slotted Boot	2	Black
				125	SM: 125µm	3	2.0mm Standard Boot	3	Green
				127	MM: 127µm	4	2.0mm High Spec FC/ST Boot	4	Beige
				230	MM: 230µm	5	2.0mm Smooth Short Boot	5	Aqua
				144	MM: 144µm	6	2.4mm Smooth Short Boot	6	Red
						7	3.0mm Smooth Short Boot	7	Yellow
						8	3.0mm Standard Boot	8	White
						9	3.0mm High Spec FC/ST Boot		

FC HIGH SPEC APC
PRE-ASSEMBLED



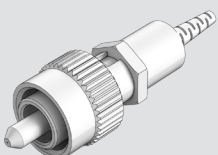
CODE		KEY		FERRULE I.D.		FERRULE POLISH		BOOT	
CN-FCASE	Elite Step Ferrule	1	Standard	1255	SM: 125.5µm	1	No Angle	1	900µm Smooth Fiber Short
CN-FCACE	Elite Conical Ferrule	2	Key Ring	126	SM: 126µm	2	8° Pre-Angle	2	900µm High Spec Slotted Boot
CN-FCAS	Step Ferrule			125	SM: 125µm			3	2.0mm Standard Boot
CN-FCAC	Conical Ferrule							4	2.0mm High Spec FC/ST Boot
								5	2.0mm Smooth Short Boot
								6	2.4mm Smooth Short Boot
								7	3.0mm Smooth Short Boot
								8	3.0mm Standard Boot
								9	3.0mm High Spec FC/ST Boot

FC SIMPLEX
CONNECTOR
PRE-ASSEMBLED



CODE		KEY		FERRULE I.D.		BOOT		COLOR	
SFC-PHPR	FC Simplex Connector	N	Narrow Key	1255S	SM: 125.5um	09	900um	BL	Blue
		W	Wide Key	127M	MM: 127um	20	2.0mm	BK	Black
				1255AP	APC: 125.5um	30	3.0mm	GR	Green

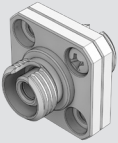
FC PM
CONNECTOR
PRE-ASSEMBLED



CODE	TYPE	KEY WIDTH		FERRULE I.D.		BOOT TYPE		BOOT COLOR	
SFC-PHPR	FC PM Connector	N	Narrow Key	1255S	SM: 125.5um	09P	900µm	BL	Blue
		W	Wide Key	1255AP	APC: 125.5um	20P	2.0mm	BK	Black
						30P	3.0mm	GR	Green

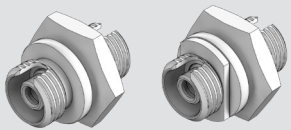
FC ADAPTERS

FC SQUARE ADAPTER



ADAPTER TYPE		SLEEVE		KEY WIDTH	
AD-FC2P	Standard Body - MM/SM	1	Zirconia Straight Split	1	For PC Connector 2.15 +0.05/-0
AD-FC1P	Solid Body - MM/SM	2	Phosphor Bronze	2	For APC Connector 2.05 +/- 0.02

FC ROUND & OVAL ADAPTER

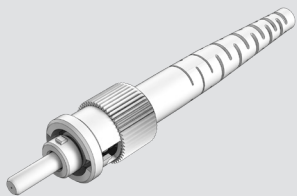


ADAPTER TYPE		SLEEVE		KEY WIDTH	
AD-FCRD	FC Adapter "D"	1	Zirconia Straight Split	1	For PC Connector 2.15 +0.05/-0
AD-FCRDD	FC Adapter "DD"	2	Phosphor Bronze	2	For APC Connector 2.05 +/- 0.02

ADAPTER TYPE		SLEEVE		KEY WIDTH	
AD-FCOV	FC Oval Adapter "HD"	1	Zirconia Straight Split	1	For PC Connector 2.15 +0.05/-0
		2	Phosphor Bronze	2	For APC Connector 2.05 +/- 0.02

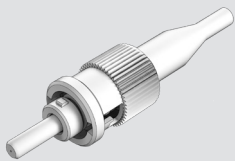
ST SERIES

ST HIGH SPEC PRE-ASSEMBLED



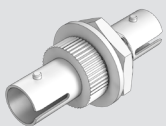
CODE		FERRULE I.D.		BOOT		BOOT COLOR	
CN-ST	Elite ST-2 type	125	SM: 125µm	1	900µm Smooth Fiber Short	1	Blue
CN-ST	High Spec ST-2 type	1255	SM: 125.5µm	2	900µm High Spec Slotted Boot	2	Black
		126	SM: 126µm	3	2.0mm Standard Boot	3	Green
		127	MM: 127µm	4	2.0mm High Spec FC/ST Boot	4	Beige
		144	MM: 144µm	5	2.0mm Smooth Short Boot	6	Red
		230	MM: 230µm	6	2.4mm Smooth Short Boot	7	Yellow
		7	3.0mm Smooth Short Boot	8	White		
8	3.0mm Standard Boot						
9	3.0mm High Spec FC/ST Boot						

ST STANDARD



CODE		FERRULE I.D.		BOOT		BOOT COLOR	
CN-ST5	Standard	1255	SM: 125.5µm	1	900µm Smooth Fiber Short	1	Blue
		127	MM: 127µm	3	2.0mm Standard Boot	2	Black
		8	3.0mm Standard Boot	4	Beige		
6	Red						
7	Yellow						
8	White						

ST ADAPTER



CODE		COLOR		SLEEVE	
AD-STSX	Simplex Metal Housing	1	Blue	1	Zirconia Straight Split
AD-STDx	Duplex Horizontal Metal Housing	4	Beige	2	Phosphor Bronze
AD-STDXP	Duplex Horizontal Plastic Housing				

SANWA Technologies, Inc.

www.sanwa-tech.com

sales@snwtech.com

Americas Sales-CA
9685 Via Excelencia; Suite 106,
San Diego, CA 92126
Tel: +1-(858)-397-2585
Fax: +1-(858)-397-2584

Americas Sales-TX
4012 Preston Rd.
Plano, TX 75093
Tel: +1 (972)-503-3031
Fax: +1 (972)-503-3032

Americas Sales-MA
287 Turnpike Road
Westborough, MA 01581
Tel: +1(508)-616-9500
Fax: +1(508)-616-9600

Europe Sales
Aleja Armii Krajowej 61, Bud. C.,
50-541 Wrocław, PL
Tel: +48 71 7277237
Fax: +48 71 7939911

MEA Sales
DP A6, 108, Silicon Oasis Free
Zone Dubai,
United Arab Emirates
Tel: +971 4 3344970
Fax: +971 4 3344971

Asia Sales
13F, Changxing Rd., Luzhou Dist.,
New Taipei City 247, Taiwan
(R.O.C.)
Tel: +886 939512000
Fax: +886 2 8285450

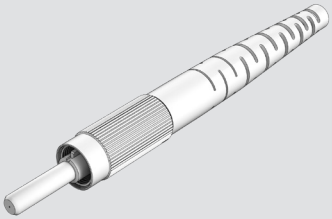


SANWA
TECHNOLOGIES



DIN SERIES

DIN HIGH SPEC
PRE-ASSEMBLED



CODE		FERRULE I.D.		BOOT TYPE		BOOT COLOR	
CN-DIN	DIN Connector PC	125	SM: 125µm	1	900um Smooth Fiber Short Boot	1	Blue
CN-DINA	DIN Connector APC	1255	SM: 12.5µm	3	2.0mm Standard Boot	2	Black
		126	SM: 126µm	8	3.0mm Standard Boot	3	Green
		127	MM: 127µm			4	Beige
						6	Red
						7	Yellow
						8	White

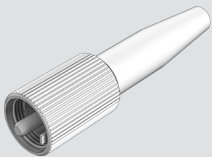
DIN ADAPTER



CODE		SLEEVE	
AD-DIN	Din Adapter	1	Zirconia Straight Split
		2	Phosphor Bronze

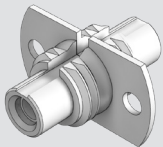
D4 SERIES

D4 CONNECTOR



CODE		FERRULE I.D.		BOOT TYPE		BOOT COLOR	
CN-D4	D4 Crimp Style	125	SM: 125µm	1	900um Smooth Fiber Short Boot	1	Blue
		126	SM: 126µm	3	2.0mm Standard Boot	2	Black
				8	3.0mm Standard Boot	3	Green
						4	Beige
						5	Aqua
						6	Red
						7	Yellow

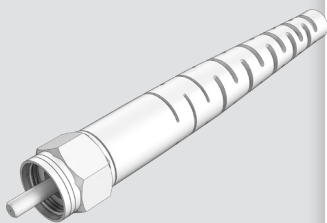
D4 ADAPTER



CODE		SLEEVE	
AD-D4	D4 Adapter	2	Phosphor Bronze Split

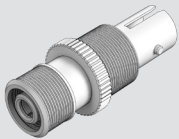
SMA SERIES

SMA CONNECTOR



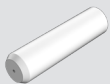
CODE		FERRULE I.D.		BOOT TYPE		BOOT COLOR	
CN-SMA	SMA with Hex Nut	127	MM: 127µm	8	3.0mm Standard Boot	1	Blue
		144	MM: 144µm			2	Black
		230	MM: 230µm			3	Green
		240	MM: 240µm			4	Beige
		245	MM: 245µm			6	Red
		250	MM: 250µm			7	Yellow
		360	MM: 360µm			8	White
		460	MM: 460µm			X	Custom

SMA ADAPTER



CODE		SLEEVE	
AD-SMA	SMA Adapter	1	Zirconia
		2	Phosphor Bronze

FERRULES SMA MULTIMODE



FERRULE		INNER DIAMETER		FERRULE		FLANGE	
F-SMA-M	SMA Connectors Multimode	127	127µm	1	Zirconia	NF	No Flange
		144	144µm	2	Metal		
		230	230µm				
		245	245µm				
		440	440µm				
		720	720µm				

SANWA Technologies, Inc.

www.sanwa-tech.com

sales@snwtech.com

Americas Sales-CA
9685 Via Excelencia; Suite 106,
San Diego, CA 92126
Tel: +1-(858)-397-2585
Fax: +1-(858)-397-2584

Americas Sales-TX
4012 Preston Rd.
Plano, TX 75093
Tel: +1 (972)-503-3031
Fax: +1 (972)-503-3032

Americas Sales-MA
287 Turnpike Road
Westborough, MA 01581
Tel: +1 (508)-616-9500
Fax: +1 (508)-616-9600

Europe Sales
Aleja Armii Krajowej 61, Bud. C,
50-541 Wrocław, PL
Tel: +48 71 7277237
Fax: +48 71 7939911

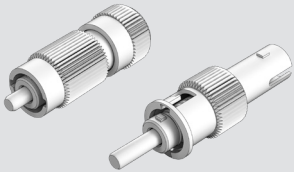
MEA Sales
DP A6, 108, Silicon Oasis Free
Zone Dubai,
United Arab Emirates
Tel: +971 4 3344970
Fax: +971 4 3344971

Asia Sales
13F, Changxing Rd., Luzhou Dist.,
New Taipei City 247, Taiwan
(R.O.C.)
Tel: +886 939512000
Fax: +886 2 8285450



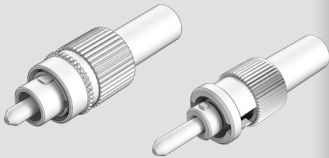
ATTENUATORS & TERMINATORS

ATTENUATORS



CODE		TYPE	CONNECTOR TYPE		ATTENUATION LEVEL		
AT	Doped Fiber Attenuators	1	Standard	FCA	FC APC	01	1dB
		2	Special	FC	FC UPC	03	3dB
		S	Specify	STA	ST APC	04	4dB
				ST	ST UPC	05	5dB
		07	7dB				
08	8dB						
09	9dB						
10	10dB						
12	12dB						
15	15dB						
20	20dB						
25	25dB						
30	30dB						

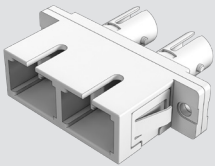
TERMINATORS



PRODUCT	CONNECTOR TYPE	
TM	FCA	FC APC
	FC	FC UPC
	STA	ST APC
	ST	ST UPC

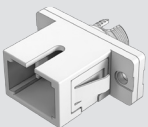
HYBRID ADAPTER

SC-ST HYBRID ADAPTER



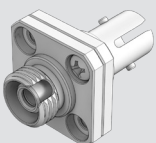
CODE/ADAPTER TYPE		COLOR (PLASTIC)		SLEEVE	
ADH-SCST-RT-M	Simplex Metal, Rectangular Flange	1	Blue	1	Zirconia
ADH-SCSTDX-M	Duplex Metal, Rectangular Flange	4	Beige	2	Phosphor Bronze
ADH-SCSTDX-P	Duplex Plastic, Blue, Rectangular Flange				
ADH-SCSTDX-P	Duplex Plastic, Beige, Rectangular Flange				

SC-FC HYBRID ADAPTER



CODE/ADAPTER TYPE		KEY WIDTH		SLEEVE	
ADH-SCFC-SQ	Square Flange	1	For PC Connector: 2.15+0.05/-0	1	Zirconia
ADH-SCFC-RT	Rectangular Flange	2	For APC Connector: 2.05 +/- 0.02	2	Phosphor Bronze

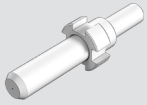
ST-FC HYBRID ADAPTER



CODE/ADAPTER TYPE		SLEEVE	
ADH-STFC-SQ	Square Flange	1	Zirconia
ADH-STFC-RT	Rectangular Flange	2	Phosphor Bronze

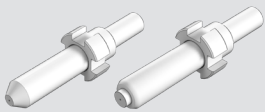
FERRULES & SLEEVES

ZIRCONIA FERRULES SC FC SINGLEMODE



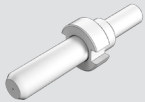
FERRULE		INNER DIAMETER		FLANGE	
F-SC-S	SC & FC Connectors Singlemode	125	125µm	NF	No Flange
		1255	125.5µm	FL	4 Slot Flange
		126	126µm		

ZIRCONIA FERRULES SC-APC FC-APC



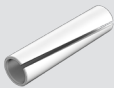
FERRULE		ENDFACE		INNER DIAMETER		FLANGE	
F	SC & FC Connectors	SCAS	APC Step	125	125µm	NF	No Flange
		SCAC	APC Conical	1255	125.5µm	FL	APC Flange, 1.35mm keywidth
		126	126µm				

ZIRCONIA FERRULES SC FC MULTIMODE



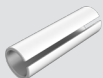
FERRULE		INNER DIAMETER		FLANGE	
F-SC-M	SC & FC Connectors Multimode	127	127µm	NF	No Flange
		144	144µm	FL	4 Slot Flange
		230	230µm		

ZIRCONIA ADAPTERS SLEEVES



SLEEVE		INNER DIAMETER		LENGTH	
S-ZR	Zirconia Sleeve	250	2.49mm	ST	10.1mm ST
		125	1.25mm	SC	11.4mm SC & FC
				LC	6.8mm (125)

PHOSPHOR BRONZE ADAPTER SLEEVES



SLEEVE		INNER DIAMETER		LENGTH	
S-PB	Phosphor Bronze	250	2.48mm	ST	10.1mm ST
		200	1.98mm	SC	11.4mm SC & FC
		125	1.25mm	104	10.4mm (200)
				988	9.88mm (200)
		LC	6.8mm (125)		

SANWA Technologies, Inc.

www.sanwa-tech.com

sales@snwtech.com

Americas Sales-CA
9685 Via Excelencia; Suite 106,
San Diego, CA 92126
Tel: +1-(858)-397-2585
Fax: +1-(858)-397-2584

Americas Sales-TX
4012 Preston Rd.
Plano, TX 75093
Tel: +1 (972)-503-3031
Fax: +1 (972)-503-3032

Americas Sales-MA
287 Turnpike Road
Westborough, MA 01581
Tel: +1 (508)-616-9500
Fax: +1 (508)-616-9600

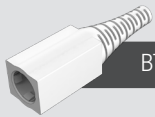
Europe Sales
Aleja Armii Krajowej 61, Bud. C,
50-541 Wrocław, PL
Tel: +48 71 7277237
Fax: +48 71 7939911

MEA Sales
DP A6, 108, Silicon Oasis Free
Zone Dubai,
United Arab Emirates
Tel: +971 4 3344970
Fax: +971 4 3344971

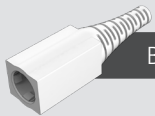
Asia Sales
13F, Changxing Rd., Luzhou Dist.,
New Taipei City 247, Taiwan
(R.O.C.)
Tel: +886 939512000
Fax: +886 2 8285450



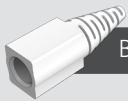
SC BOOTS



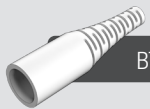
BTSC2PM



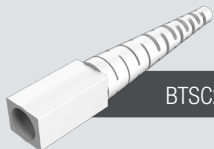
BTSC3PM



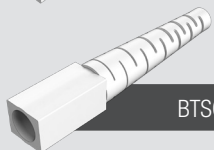
BTSC9PM



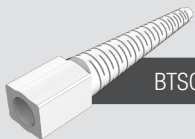
BTPCN-DM



BTSC2P



BTSC3P

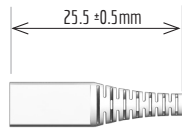


BTSC9P-X

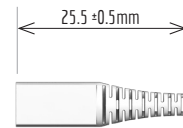
MINI BOOTS

SMALL BOOTS

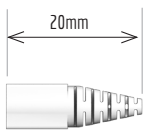
SPECIAL BOOTS



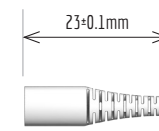
BTSC2PM
SC 2.0mm Mini Boot for 3.8mm backpost



BTSC3PM
SC 3.0mm Mini Boot for 3.8mm backpost

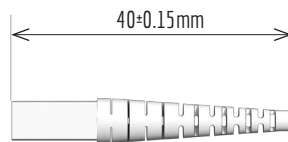


BTSC9PM
SC 0.9mm Mini Boot for 3.8mm backpost

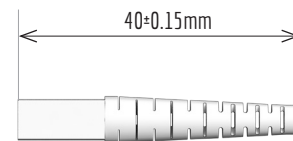


BTPCN-DM
SC/ST/FC 2.0mm Mini Boot for 3.8mm Backpost

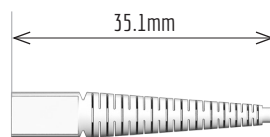
BOOT COLOR	
1	Blue
2	Black
3	Green
4	Beige
5	Aqua
6	Red
7	Yellow
8	White
0	Gray



BTSC2P
2.0mm Premium SC Boot



BTSC3P
3.0mm Premium SC Boot



BTSC9P-X
900um Smooth Fiber Short SC Boot

1.6mm Option: SANWA TECH Offers a 1.6mm Crimp Ring that is compatible with all 2.0mm boots listed above.

SC BOOTS (SPECIFIC)	
F4M-BTSC9P	900um GR-type SC Boot
F4M-BTSC12P	1.2mm Slotted SC Boot
F4M-BTSC2P	2.0mm High Spec SC Boot
F4M-BTSC2PM	2.0mm Slotted SC Mini Boot
F4M-BTSC3PM	3.0mm Slotted SC Mini Boot
F4M-BTSC3P	3.0mm High Spec SC Boot

CRIMP RING, PREMIUM SC/FC/ST	
F4M-CR12-P	1.2mm
F4M-CR16-P	1.6mm
F4M-CR2-P	2.0mm
F4M-CR24-P	2.4mm
F4M-CR3-P	3.0mm



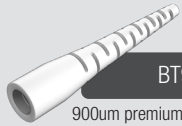
SANWA
TECHNOLOGIES



SC BOOTS

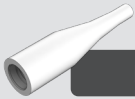
FC BOOTS

ST BOOTS



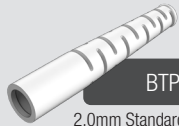
BT9P

900um premium SC/FC ST/Boot



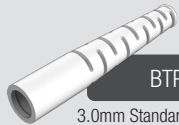
BTPCN-A

900um Smooth Fiber Short SC/FC/ST Boot



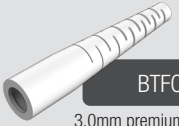
BTPCN-D

2.0mm Standard SC/FC/ST Boot



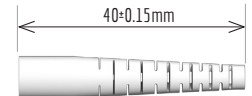
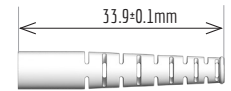
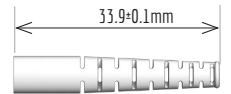
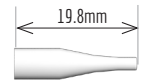
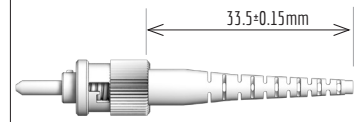
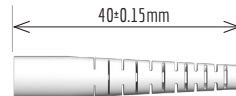
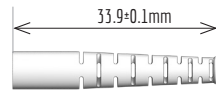
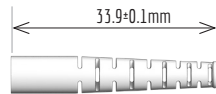
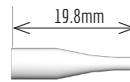
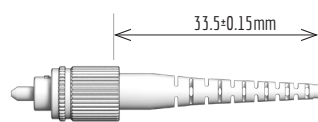
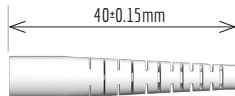
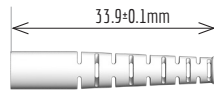
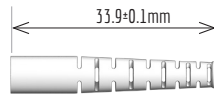
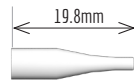
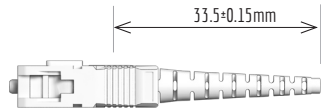
BTPCN-H

3.0mm Standard SC/FC/ST Boot



BTF CST3P

3.0mm premium SC/FC ST/Boot



STANDARD BOOTS	
BOOT CODE	DESCRIPTION
SC / FC / ST BOOTS	
F4M-BTPCN-A	900um Smooth Fiber Short SC/FC/ST Boot
F4M-BTPCN-D	2.0mm Standard SC/FC/ST Boot
F4M-BT2S	2.0mm Smooth Short SC/FC/ST Boot
F4M-BT24S	2.4mm Smooth Short SC/FC/ST Boot
F4M-BT3S	3.0mm Smooth Short SC/FC/ST Boot
F4M-BTPCN-H	3.0mm Standard SC/FC/ST Boot
F4M-BTF CST3P	3.0mm High Spec SC/FC/ST Boot

CRIMP RING, PREMIUM SC/FC/ST	
F4M-CR12-P	1.2mm
F4M-CR16-P	1.6mm
F4M-CR2-P	2.0mm
F4M-CR24-P	2.4mm
F4M-CR3-P	3.0mm

1.6mm Option: SANWA TECH Offers a 1.6mm Crimp Ring that is compatible with all 2.0mm boots listed above.

BOOT COLOR	
1	Blue
2	Black
3	Green
4	Beige
5	Aqua
6	Red
7	Yellow
8	White
0	Gray

SANWA Technologies, Inc.

www.sanwa-tech.com

sales@snwtech.com

Americas Sales-CA
9685 Via Excelencia; Suite 106,
San Diego, CA 92126
Tel: +1-(858)-397-2585
Fax: +1-(858)-397-2584

Americas Sales-TX
4012 Preston Rd.
Plano, TX 75093
Tel: +1 (972)-503-3031
Fax: +1 (972)-503-3032

Americas Sales-MA
287 Turnpike Road
Westborough, MA 01581
Tel: +1(508)-616-9500
Fax: +1(508)-616-9600

Europe Sales
Aleja Armii Krajowej 61, Bud. C,
50-541 Wrocław, PL
Tel: +48 71 7277237
Fax: +48 71 7939911

MEA Sales
DP A6, 108, Silicon Oasis Free
Zone Dubai,
United Arab Emirates
Tel: +971 4 3344970
Fax: +971 4 3344971

Asia Sales
13F, Changxing Rd., Luzhou Dist.,
New Taipei City 247, Taiwan
(R.O.C.)
Tel: +886 939512000
Fax: +886 2 8285450