



**SANWA**  
TECHNOLOGIES

# MPO SERIES

High-Density Data Centers Connections

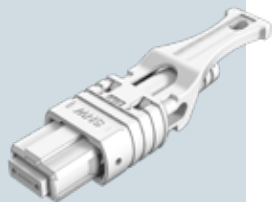
We Create, We Customize, We Connect





MPO CONNECTORS

**MPO HD CONNECTORS**



TYPE		MODE & GRADE		FIBER COUNT		HOUSING		BOOT		TAB	
MPOS-M	Male (Guide Pin)	MS	MM Standard	12	12-Fiber	GR	Green	R30SS	3mm Round	-	No Tab
MPOS-FN	Female (No Guide Pin)	MH	MM High grade			AQ	Aqua			T1	Tab
						YE	Yellow				
						HV	H. Violet				

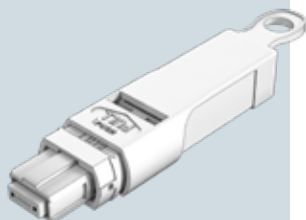
**MPO CONNECTORS KIT**



TYPE		MODE & GRADE		FIBER COUNT		HOUSING		BOOT	
MPO-PM	Male (Guide Pin)	SS	SM Standard (For 12-fiber)	12	12-Fiber	GR	Green	T1	Ribbon Fiber
MPO-PF	Female (No Guide Pin)	MH	MM High grade	24	24-Fiber	AQ	Aqua	R30	3mm Round
		MS	MM Standard			YE	Yellow	F1	Oval Jacket
						HV	H. Violet		



**MPO LOOPBACK**



TYPE		HOUSING	
LB-MPO-12FSM	MPO/APC Loopback 12F SM	GR	Green
LB-MPO-12FOM3	MPO/PC Loopback 12F OM3	AQ	Aqua
LB-MPO-24FSM	MPO/APC Loopback 24F SM	GR	Green
LB-MPO-24FOM3	MPO/PC Loopback 24F OM3	AQ	Aqua

Interconnect-SNW-Rev.3.0 - Changes without prior notice

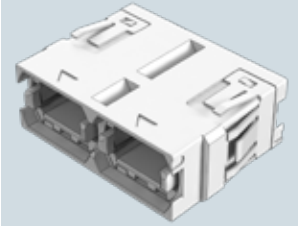




TYPE		HOUSING		KEY TYPE		FLANGE	
MPO-AD1	Simplex (With Long Flange)	BK	Black	-	Cross Key	-	No Flange
MPO-AD2	Simplex (With Short Flange)	AQ	Aqua	X	Straight Key (SC Footprint)	F	With Flange (SC Footprint)
MPO-ASP	Simplex (SC Footprint)	HV	H. Violet				
MPO-2ASP	Duplex (SC Footprint)	LG	Light Gray (MPO Footprint)				
		G	Light Gray (SC Footprint)				

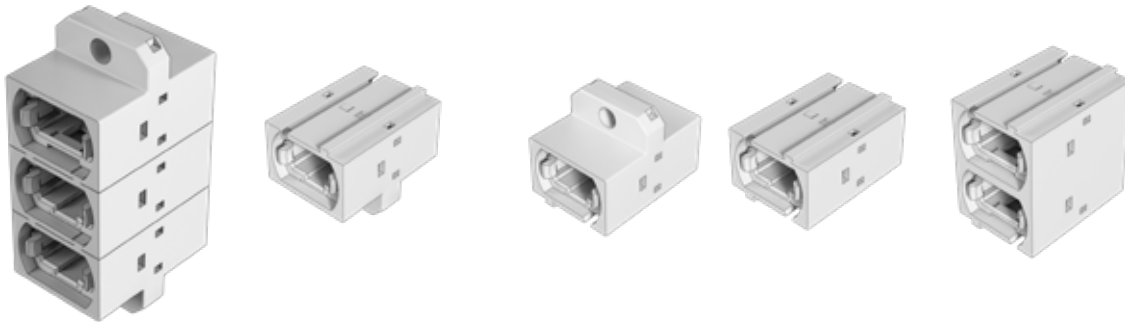
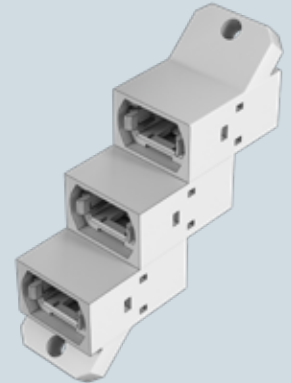


MPO ADAPTER



CODE	TYPE		N#STACK		COLOR	N#PORTS		N#ROWS		
AD-SMP	AN	Angled	N#SX	Simplex	BK	Black	N6	6 Ports	M1	1 Row
	ST	Straight	N#DX	Duplex (Straight version)			N8	8 Ports	M2	2 Row
							N12	12 Ports	M3	3 Row
							N..	~ Ports	S	Specify
							N24	24 Ports		
							S	Specify		

MPO STACKABLE ADAPTER



TYPE		FIBER COUNT		MODE & GRADE		FERRULE BOOT	
MT	MT Ferrule	12	12-Fiber	SS	SM Standard (For 12-Fiber)	Y	With Boot
		24	24-Fiber	MH	MM High grade	N	Without Boot
				MS	MM Standard		

MPO/MT® FERRULE



The latest MPO Series by SANWA offers unmatched high-precision optical performance and stability. Our broad line of passive fiber optic components incorporate the industry's newest injection molding technology and state-of-the-art assembly and test procedures to ensure the highest level of product quality.

**Application**

- Data Centers
- Telecommunications
- High-Speed Computing

## OVER THE WORLD

SANWA product selection offers a wide range of high-quality and reliable solutions for various applications. Fiber optic technology is known for its ability to transmit data at incredibly fast speeds over long distances, making it ideal for telecommunications, networking, and data center environments.



- USA**
- EUROPE**
- MIDDLE EAST**
- TAIWAN**
- THAILAND**
- JAPAN**



**SANWA Technologies, Inc.**

[www.sanwa-tech.com](http://www.sanwa-tech.com)

[sales@snwtech.com](mailto:sales@snwtech.com)

**Americas Sales-CA**

9685 Via Excelencia; Suite 106,  
San Diego, CA 92126  
Tel: +1-(858)-397-2585  
Fax: +1-(858)-397-2584

**Americas Sales-TX**

4012 Preston Rd.  
Plano, TX 75093  
Tel: +1 (972)-503-3031  
Fax: +1 (972)-503-3032

**Americas Sales-MA**

287 Turnpike Road  
Westborough, MA 01581  
Tel: +1(508)-616-9500  
Fax: +1(508)-616-9600

**Europe Sales**

Aleja Armii Krajowej 61, Bud.  
C, 50-541 Wrocław, PL  
Tel: +48 71 7277237  
Fax: +48 71 7939911

**MEA Sales**

DP A6, 108, Silicon Oasis  
Free Zone Dubai,  
United Arab Emirates  
Tel: +971 4 3344970  
Fax: +971 4 3344971

**Asia Sales**

13F, Changxing Rd., Luzhou  
Dist., New Taipei City 247,  
Taiwan (R.O.C.)  
Tel: +886 939512000  
Fax: +886 2 8285450

## Catalog 2023

All information provided in this document is subject to legal disclaimers. SANWA Technologies, Inc. © 2023. All rights reserved.

